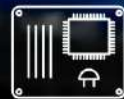


Product Guide

Extension Modules and Accessories

The comprehensive family of extension modules and control accessories enable users to custom design control systems to meet individual project requirements and bring wider scope and flexibility to ComAp control products.



InternetBridge-NT

Communication Module with Cellular/Ethernet Connection



- > Internet connection for one or more ComAp controllers, either by Ethernet cable or by built in 3.75G Cellular modem
- > Wireless high speed GPRS/UMTS modem built in
- > Supports all cellular packet data systems from GPRS to HSPA (2.5G to 3.75G)
- > Full Multiband support – modem works globally
- > Ethernet wired connection for local LAN connection
- > Single module can be used for multiple controllers on the same site (connected via CAN or RS485)
- > MODBUS/TCP, SNMP protocol support – direct connection to building management and other systems
- > Includes ComAp AirGate technology – easy plug-and-play connection anywhere (no fixed IP needed)

Order code
IB-NT

InternetBridge-NT 4G

Communication Module with Cellular/Ethernet Connection



- > Ethernet/Internet connection module
- > For single or multiple controllers, connection via CAN2, RS485 or RS232 (single)
- > 100Mbps ethernet port for wired ethernet connection
- > Built-in cellular modem for wireless Internet connection
- > Supports all cellular network types up to LTE (4G)
- > Three variants of the product for usage in different geographical areas
- > Communication with all ComAp tools directly or via AirGate
- > SNMP, MODBUS/TCP available on ethernet port
- > Sends important controller events as active e-mails and/or SMS

Order code
CM2IB4GABFB
CM2IB4GEBFB
CM2IB4GJBFB

CM-Ethernet

Internet / Ethernet plug-in communication module



- > Plug-in module for functional extension of new IntelliLite controllers.
- > Internet / Ethernet module with 10/100 Mbit interface over RJ45 socket
- > Embedded webserver for monitoring and basic adjustments
- > ModBus TCP support
- > Full SNMP V1/V2C support
- > ComAp TCP for remote access and full control over IntelliConfig
- > SMTP protocol with authentication for active e-mails sending
- > AirGate technology support for easy connection – no need of public and static IP address

Order code
CM2ETHERXB

CM-4G-GPS

4G & GPS plug-in communication module



- > Plug-in module for functional extension of new IntelliLite controllers
- > Communication module providing wireless internet connectivity
- > 4G – LTE
- > 3G – WCDMA, HSDPA, HSUPA, HSPA+
- > 2G – GPRS, EDGE
- > GSM (850 / 900 / 1800 / 1900 Mhz)
- > Remote monitoring and control capabilities via IntelliConfig, WebSupervisor and active SMS / Emails alerts and control
- > WebSupervisor system support for web based monitoring and control of one or multiple controllers at the same time
- > AirGate technology support for easy connection
- > Automatic SMS message on alarm events
- > SMS control of gen-set/engine
- > GPS location with geofencing and tracking

Order code
CM14GGPSXBX

CM-GPRS

GPRS plug-in communication module

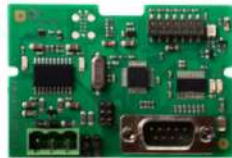


- > Plug-in module for functional extension of new IntelliLite controllers
- > Communication module providing wireless internet connectivity over GPRS and GSM communication
- > Remote monitoring and control capabilities via IntelliConfig, WebSupervisor and active SMS / Emails alerts and control
- > WebSupervisor system support for web based monitoring and control of one or multiple controllers at the same time
- > AirGate technology support for easy connection
- > Automatic SMS message on alarm events
- > SMS control of gen-set/engine

Order code
CM2GPRSXXBX

CM-RS232-485

Dual port (RS232 & RS485) plug-in communication module



- > Plug-in module for functional extension of new IntelliLite controllers
- > Communication module with dual port for RS232 and RS485 providing 2 separate and independent COM channels
- > Supports Modbus RTU, ECU link and direct connection to IntelliConfig

Order code
CM232485XB

IB-Lite

Internet / Ethernet Module including Web Server



- > Plug-in communication module for IntelliATS^{NT}, IntelliLite^{NT}, IntelliCompact^{NT} and IntelliDrive Lite controllers used with a standard firmware
- > 10/100 MBit ethernet interface in RJ45 socket
- > Web interface for basic monitoring and adjustment of the controller
- > ComAp/TCP protocol for remote access from LiteEdit or IntelliMonitor
- > Modbus/TCP protocol for integration of the controller into building management systems or other remote monitoring purposes
- > SNMP v1 Agent
- > SMTP protocol with authentication for sending of active e-mails
- > Web-based configuration and firmware upgrade of the module
- > AirGate technology support for easy connection

Order code
IB-Lite

IL-NT GPRS

GSM / GPRS Modem Plug-In Module



- > Plug-in communication module for IntelliLite^{NT}, IntelliCompact^{NT} and IntelliDrive Lite controllers GSM Modem function for dial-up connection
- > GPRS support for wireless internet connection
- > WebSupervisor system support for web based monitoring and control of one or multiple controllers at the same time
- > AirGate technology support for easy connection over GPRS, overcomes many of the issues traditionally experienced with internet connection to embedded systems
- > WebSupervisor and AirGate support
- > Remote access from LiteEdit or IntelliMonitor
- > Mobile and wireless solution

Order code
IL-NT-GPRS

► Colour displays and Modules ► Extension Modules and Accessories

61

IL-NT RS232 / IL-NT RS232-485

RS232 Extension Board /
Dual Port Extension Board



IL-NT RS232

- > Extension board containing RS232 port for IntelliLite^{NT}, IntelliCompact^{NT} and IntelliDrive Lite controllers

IL-NT RS232-485

- > Dual port module with RS232 and RS485 interfaces at independent COM channels
- > The RS232 is connected to COM1 and RS485 to COM2
- > Compatible with IntelliLite^{NT}, IntelliCompact^{NT} and IntelliDrive Lite.

Order code
IL-NT-RS232
IL-NT-232-485

IL-NT S-USB

Service USB Module



- > Easily removable plug-in communication module with USB device interface
- > For IntelliLite^{NT}, IntelliCompact^{NT}, IntelliDrive Lite controllers

Order code
IL-NT-S-USB

ID-Mobile GPS / ID-Mobile GPRS

GPS Plug-In Module /
GSM / GPRS Modem
Plug-In Module



GPS

- > Plug-in GPS module for IntelliDrive Mobile / Mobile Logger controllers
- > GPS function of exact controller location
- > Enables protection against unwanted manipulation of the controller (GeoFencing)
- > Module is supplied with antenna connector

GSM

- > GSM Modem function for dial-up connection
- > GPRS support for wireless internet connection
- > WebSupervisor and Airgate support
- > Remote access from DriveMonitor or IntelliMonitor
- > Automatic SMS message on alarms or events
- > SMS control of gen-set

Order code
ID-MOBILE GPS
ID-MOBILE GPRS

ID-COM

Communication Module



- > Communication module for multiple engine installations, remote displays and redundancy communication
- > Interface for CAN1 Extension and J1939 modules
- > Interface for CAN2 Inter-controller
- > Interface for J1708 redundancy line
- > Marine Approved
- > UL certified
- > Galvanic separate RS485 for IV12TOEM or for 3rd party system connection, for up to 1000 meters

Order code
ID-COM RS485
ID-COM CM2J1708BZB

I-LB+

Local Bridge



- > Communication bridge for sites with multiple controllers for local or remote monitoring and control
- > Direct (RS232, RS485), modem, Modbus or USB connection to multiple controllers
- > Communication speed up to 57600 bps (including Modbus mode)
- > Analog / GSM / ISDN / CDMA modem support

Order code
I-LB+

I-CB/ModbusModbus RTU
Communication Bridge

- > Versatile programmable interface unit between IntelliGen^{NT}, IntelliSys^{NT} or IntelliDrive controllers and any Modbus RTU device
- > Predefined databases of values for Cummins PCC, CAT EMCP, CAT PL1000 and other devices
- > Suitable for monitoring circuit breakers, flow meters, PLCs etc. with Modbus RTU protocol
- > RS485/RS232 interfaces
- > I-CB/Modbus together with the controller act as a Modbus master

Order code
I-CB/MODBUS

I-CR-R

CAN Redundancy Module



- > Provides intercontroller CAN bus redundancy by adding parallel RS485 communication bus
- > Provides intercontroller bus extension as well
- > Intended for achieving high reliability of the intercontroller communication in complex applications where the parts of the technology are separated from each other and the intercontroller bus is exposed to a risk of interruption
- > I-CR-R may be used as a redundancy module for a maximum of 20 controllers (counted all controllers on the CAN2 bus)
- > UL Certified

Order code
I-CR-R

I-CR

CAN Repeater Module



- > Intercontroller CAN bus extension (where the maximum distance limit would be exceeded)
- > Intercontroller CAN bus bus-tie bridging – makes groups of controllers in segments A and B “invisible” one for another depending on bus-tie breaker state, keeping the PC communication in function for all controllers
- > One or more I-CR modules can be used
- > UL certified

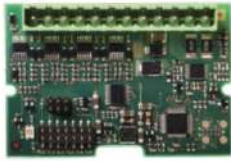
Order code
I-CR

► Colour displays and Modules ► Extension Modules and Accessories

63

EM-BIO8-EFCP

Binary I/O plug-in module with earth fault current protection measurement



- > Plug-in module for functional extension of new IntelliLite controllers
- > Extension module with 8 configurable binary terminals for inputs or outputs
- > Possibility to connect a current transformer for earth fault current measurement and protection

Order code
EM2BIO8EXBX

IC-NT CT-BIO7

Hybrid Current Input & Binary Input/Output Extension Module



- > Hybrid current input & binary input/output module
- > Applicable to IntelliCompact^{NT} SPtM v. 1.2 and higher, IntelliCompact^{NT} MINT v. 1.3 and higher
- > One additional AC current (CT) measuring input
- > Up to 7 configurable additional binary inputs or outputs

Order code
IC-NT-CT-BIO7

IL-NT BIO8

Binary Input/Output Module



- > Hybrid binary input/output module
- > Applicable to IntelliLite^{NT} v1.5 and higher, IntelliCompact^{NT} v1.2 and higher, IntelliATS^{NT} v2.0 and higher and IntelliDrive Lite v1.6 and higher
- > Up to 8 additional configurable binary inputs or outputs

Order code
IL-NT-BIO8

IL-NT AIO

Analog Input/Output Module



- > Extension plug-in module increasing the number of analog inputs and output of selected engine controllers
- > 4 configurable analog inputs for the sensors (in range 0 – 2400 Ω; 0/4-20mA; 0-4VDC)
- > 1 configurable analog output for the sensor (in range 0/4-20mA; 0-4,5VDC; PWM 5V/500Hz)

Order code
IL-NT-AIO

IL-NT AOUT8

Analog Outputs for PWM Gauges Module



- > Gauge driver plug-in interface
- > Applicable to IntelliLite^{NT}, IntelliCompact^{NT} and IntelliDrive Lite
- > Up to 8 gauges (such as VDO, Datcon) can be driven by one controller

Order code
IL-NT-AOUT8

IL-NT IO1

Analog Output and Binary Input Module



- > Extension plug-in module increasing the number of analog outputs and binary inputs of selected engine controllers
- > 4 configurable analog outputs (output range: 0 to +VBatt ±1V)
- > 4 configurable binary inputs

Order code
IL-NT-IO1

Inteli AIN8

8 Analog Input Channels and 1 RPM/Impulse Input Module



- > Inteli AIN8 module allows users to expand the amount of analog inputs for sensors and add Impulse/RPM input that can be attached to a controller
- > Up to 8 configurable inputs (sensors) can be attached to the controller, and up to ten of the Inteli AIN8 modules can be connected to IntelliSys^{NT}, InteliGen^{NT}, InteliMains^{NT} controllers (up to four in case IntelliDrive DCU controller)
- > The Inteli AIN8 is determinate for the IntelliSys^{NT}, InteliGen^{NT}, InteliMains^{NT} and IntelliDrive DCU controllers
- > Current (active or passive sensors):
 - ±20mA , 0-20mA, 4-20mA Voltage
 - ±1V, 0-2,4V, 0-5V, 0-10V
 - Lambda probes
 - **Thermocouples are not supported** (the measuring loop was designed for lambda probes, what caused non-support of thermocouples)

Order code
I-AIN8

Inteli AIN8TC

8 Analog Channels Module



- > Inteli AIN8TC extension module allows customers up to 8 analog input channels for measuring temperature by thermocouples
- > The Inteli AIN8TC is useful in situations where extremely accurate temperature readings are required
- > Up to 10 modules can be connected to a each controller, making accurate temperature readings both simple and reliable
- > It is compatible with J, K and L types of thermocouples and cold junction compensation is supported

Order code
I-AIN8TC

► Colour displays and Modules ► Extension Modules and Accessories

65

IntelI IO8/8

Binary Inputs/Outputs and Analog Outputs Module



- > The extension module IntelI IO8/8 offers users more binary inputs and outputs for ComAp controllers
- > The unit offers the user the flexibility to configure the unit to have 8 binary inputs, 8 binary outputs, or 16 binary inputs, 0 binary outputs and 2 analog outputs via switches inside the controller
- > The IntelI IO8/8 is compatible with the IntelIDrive DCU, IntelIMains^{NT}, IntelIGen^{NT} and IntelISys^{NT} ranges of controllers
- > Up to 12 IntelI IO8/8 module (in configuration 8/8) can be connected to the controller (IntelISys^{NT} / IntelIGen^{NT} / IntelIMains^{NT})
- > Up to 6 IntelI IO8/8 module (in configuration 16/0) can be connected to the controller (IntelISys^{NT} / IntelIGen^{NT} / IntelIMains^{NT})

Order code
I-IO8/8

IntelI AIO9/1

Analog Input Output Module



- > IntelI AIO9/1 module is designed for applications where DC measurement of current and voltage is necessary – such as Hybrid applications
- > Module is equipped with:
 - > Analog inputs:
 - 4 channels for differential voltage measurement; range $\pm 65V$ DC (for example battery voltage measurement)
 - 4 channel equipment sensors: thermocouples J,K,L , $\pm 75mV$ (for current measurement via resistor shunts)
 - 1 channel for resistance measurement 0-2400 Ω (sensors: 0-2400 Ω , PT1000 or NI1000)
- > Analog output with options: 0-20mA, 0-10V or PWM
- > Currently this module is supported in the software IGS-NT 3.1.1, IM-NT 3.1.1 or higher

Order code
I-AIO9/1

I-AOUT8

Analog Output Module



- > 8 configurable analog outputs
- > Outputs are configurable to:
 - 0-10VDC or
 - 0/4-20mA range or
 - 1200 Hz pwm
- > Up to four I-AOUT8 can be connected to one controller
- > UL certified

Order code
I-AOUT8

IGS-PTM

Analog/Binary Input/Output Module



- > Configurable 8 binary and 4 analog inputs
- > Configurable 8 binary and 1 analog output
- > LEDs indicate the state of binary inputs/outputs
- > Measures values from Pt100 and Ni100 sensors
- > Analog inputs (resistance range 0-250 Ω , voltage range 0-100mV, current range 0-20mA – selectable via jumper)
- > Up to 4 IGS-PTM can be connected to the controller
- > UL certified

Order code
IGS-PTM

IGL-RA15

Remote Annunciator



- > 15 programmable LEDs with configurable colours red/green/yellow
- > Customizable labels
- > Local horn output
- > Lamp test function
- > Maximal distance 200m from the controller
- > Up to 4 units can be connected to the controller
- > UL certified

Order code
EM2IGLRABAA

IG-AVRi

AVR Interface



- > Interface ensuring voltage matching between IntelliGen^{NT} or IntelliSys^{NT} controller and generator AVR
- > 4 kV electric insulation between controller and AVR
- > DIN rail design

Order code
IG-AVRi

ECON-4

Digital speed governor



- > ECON-4 is digital speed governor dedicated for speed control of gas or diesel engines
- > ECON-4 guarantees precise and fast speed control in variable load applications (island operation) and precise load control in network parallel operation
- > ECON-4 can control different types of actuators (linear, bridge, low voltage signal) providing up to 8A continuous signal which makes it a general speed controller for almost every actuator on the market for engines in range up to few MWel
- > Additionally ECON-4 can be connected with the gen-set control system via CAN line which significantly reduce and simplify the wiring and commissioning work
- > Isochronous/droop mode
- > Actuator position feedback utilisation

Order code
ECON-4

ID-SCM

Speed Control Module



- > Interface module for IntelliDrive DCU Industrial, IntelliDrive OCU and IntelliDrive DCU Marine controllers for full support of internal PLC (programmable logic) in wide range of applications
- > Module is mounted directly on the controller body
- > Inputs and outputs:
 - RPM1, RPM2: inputs for frequency measuring – up to 8 kHz
 - IMP1, IMP2: inputs for integral (consumption) measuring up to 60 Hz
 - AOUT1, AOUT2: analog outputs 0 – 10VDC or 0 – 20 mA
 - Speed Governor Output: ±10VDC or ±10VDC via 10kΩ or PWM (1,6kHz)
- > UL certified

Order code
ID-SCM

► Colour displays and Modules ► Extension Modules and Accessories

67

IntelI RPU

Redundant Protection Unit



- > Redundant engine protection unit for IntelIDrive Marine controller
- > Backup module for marine engines
- > Automatic switchover between primary and secondary power supply
- > Monitors function of main IntelIDrive Marine controller
- > In case of IntelIDrive Marine failure, it switches to the backup mode and protects the engine
- > RPM input with hardwired overspeed protection
- > Fuel and Stop solenoids with BW detection
- > Built-in self-diagnostics feature

Order code
EM1RPUXXBZB

I-STEP

Stepper motor driver



- > Stepper motor driver, dedicated to control various flaps, actuators, e.g. Air/Fuel ratio Mixers which ensures precise position control of such a device. Capable to control 2 stepper motors from one unit at once, both independently, which makes it ideal for all engine sizes and arrangements (in-line and V-type)
- > Capable to operate in various modes, ranging from mode with position feedback or based on calibration end-points
- > Fully supported over CAN communication in specific ComAp controllers and firmware – e.g. IntelSys Gas which makes the wiring simple and all parameters and values are accessed from the main control unit

Order code
I-STEP

EP250 / EP300

Electronic Potentiometer

**EP250**

- > Microprocessor-controlled device designed for control and regulation systems
- > 3 binary inputs (increase, decrease, init), one 2-pole output of variable resistance
- > Position of the wiper is controlled by binary inputs
- > Current percentage value is indicated by LED bar graph on the front panel
- > Setpoints (position change rate and init position) are adjustable via DIP switches

EP300

- > 3 binary inputs (increase, decrease, init), one 3-pole output of variable resistance (potentiometer)
- > Current percentage value is indicated by LED display on the front panel
- > Setpoints (position change rate, position limits, init position and others) are adjustable via buttons and LED display on the front panel

Order code
EP250
EP300

IntelICharger 60 12-A / 60 24-A

Automatic Battery Chargers



- > Sealed electronic construction
- > Protection: short circuit / overload / over voltage / over temperature / reverse battery
- > Universal AC input ranges
- > Low ripple output
- > Naturally cooled
- > Voltage adjust potentiometer
- > Optional fail alarm relay¹⁾
- > Charger can be used as a standalone power supply

¹⁾ This feature is available with IntelICharger 60 12-AF and IntelICharger 60 24-AF models, also offered by ComAp.

Order code
12A - ICHG-60-12-A
24A - ICHG-60-24-A

IntelCharger 500

Automatic Battery Charger



- > 20 A nominal outputs
- > High power and efficiency
- > High reliability
- > Suits all battery types
- > Fully automatic operation
- > 24 V nominal outputs
- > Naturally cooled – fan-less design
- > Optional alarms (& bi-colour LEDs)
- > Optional intelligent multi-stage charge profile with auto equalise
- > Optional boost charging system

Order code
ICHG-500

IntelCharger 240 24

Automatic Battery Charger



- > 24 V / 10 A nominal output
- > Adjustable voltage and current output
- > Microprocessor controlled charging algorithm
- > Protections: short circuit / overload / over temperature / reverse battery / battery under voltage
- > Universal AC input range
- > Naturally cooled
- > Fail alarm relays
- > Charger can be used as a standalone power supply

Order code
ICHG-240 24

IntelCharger 120 12

Automatic Battery Charger



- > 12 V / 10 A nominal output
- > Adjustable voltage and current output
- > Microprocessor controlled charging algorithm
- > Protections: short circuit / overload / over temperature / reverse battery / battery under voltage
- > Universal AC input range
- > Naturally cooled
- > Fail alarm relays
- > Charger can be used as a standalone power supply
- > Intelligent support for charging Open Lead Acid, Sealed Lead Acid and Lead Gel batteries

Order code
ICHG-120 12

IntelCharger 120 12-24

Automatic Battery Charger



- > 24 V / 5 A or 12 V / 6 A nominal output (dual voltage)
- > Adjustable voltage and current output
- > Microprocessor controlled charging algorithm
- > Protections: short circuit / overload / over temperature / reverse battery / battery under voltage
- > Universal AC input range
- > Naturally cooled
- > Fail alarm relay
- > Charger can be used as a standalone power supply

Order code
ICHG-120 12-24

► Colour displays and Modules ► Extension Modules and Accessories



PC monitoring and configuration software

ComAp's dedicated PC software and configuration tools ensure operating and monitoring generators and engine controllers is both easy and accessible. The software is custom designed to ensure the optimum performance of ComAp controllers and helps users configure, supervise and monitor as well as manage and interpret trend information.



71

InteliMonitor

PC Monitoring Tool
for Inteli Controllers



- > InteliMonitor is Windows 2000/XP/Vista/Win7/Win10 software which provides following main functions:
 - Online monitoring of a controller or site
 - Fully customizable SCADA diagram
 - Browsing of all measured and computed values
 - Browsing of controller history records
 - Adjusting setpoints
 - Receiving active calls
 - PLC Monitor, great PLC monitoring tool is a part of InteliMonitor
- > InteliMonitor can be connected to the controller or site:
 - directly using a serial cable
 - remotely via modems
 - remotely via Internet (ethernet)
 - remotely via AirGate
 - offline (browsing previously saved data)

WebSupervisor

Cloud-based System for Remote Monitoring
of ComAp Controllers



Overview of all your assets' actual status, alarm notifications, asset location on a map, detailed logging of data, historical trends, machine control and management – all on one screen using WebSupervisor.

From your PC, tablet or mobile phone you can instantly reach the most important and relevant data. The responsive design ensures easy to use operation on any screen size.

- > Map view of assets
- > Table view with alerts
- > Quick detailed view
- > Historical graphs and trends
- > Automatic weekly&monthly reports
- > Fast GUI
- > Single machine or group control
- > Quick connection to PC tools
- > Storage of history records from controller

The flexible system provides a high level of security, with the central administrator able to determine users' access rights for specific equipment within the fleet as well as appropriate information. In addition, event generated e-mails can be created and sent to specific users to give fast and efficient notification to improve decision making or react to additional revenue generating opportunities.

For more information please visit
www.websupervisor.net

Mobile apps also available.



► PC monitoring and configuration software

73

LiteEdit

PC Configuration and Monitoring Tool



- > LiteEdit is Windows software which provides following main functions:
- > To be used with IntelliATS^{NT}, IntelliLite^{NT}, IntelliCompact^{NT}, MainsCompact^{NT}, IntelliDrive Lite and IntelliPro controllers
- > Remote control and monitoring, parameters adjustment
- > Controller configuration and programming, controller firmware upgrade, cloning of configuration
- > Support of electronic engines
- > Controller language translation
- > Connection via USB, RS232, modem, internet or AirGate

InteliConfig

PC Configuration and Monitoring Tool



- > PC Configuration and Monitoring Tool supporting latest IntelliLite and IntelliGen 200 controllers
- > Remote control, monitoring and On-line / Off-line parameters adjustment with 3 levels of password protection
- > Controller and module configuration, programming and cloning
- > Built in PLC Editor and PLC Monitor
- > Power format and ECU unit selection
- > Gen-set and ECU Alarm monitoring + complete real time history
- > Custom 'Welcome' screen editor
- > Search tool
- > Embedded manuals
- > Auto-hiding of unused setpoints

GenConfig

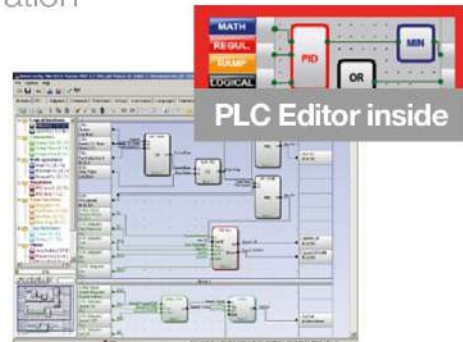
PC Configuration Tool for IG/IS-NT Controllers



- > GenConfig is Windows based software which provides following main functions:
 - Modify the controller configuration – i.e. define peripheral modules, assign functions and/or protections to inputs and outputs, create PLC program and other
 - Controller firmware upgrade
 - Adjust initial values of setpoints
 - Read/write configuration from/into the controller
 - Load configuration from file, save it to file
- > GenConfig 2.4 and higher contains the powerful graphic editor for user-friendly creating the PLC program
- > GenConfig 2.6.1 and higher contains Screen Editor, that allows you to personalise the interface on colour displays by managing screen type, selecting instruments and creating backgrounds from a toolbox of graphical elements.

DriveConfig

PC Tool for IntelliDrive Controllers Configuration



- > DriveConfig is Windows based software which provides following main functions:
 - Modify the controller configuration – i.e. define peripheral modules, assign functions and/or protections to inputs and outputs, create PLC program and other
 - Controller firmware upgrade
 - Adjust initial values of setpoints
 - Read/write configuration from/into the controller
 - Load configuration from file, save it to file
- > DriveConfig 2.0 and higher contains the powerful graphic editor for user-friendly creating the PLC program.
- > DriveConfig 3.1 and higher contains ScreenEditor, that allows you to personalise the interface on colour displays by managing screen type, selecting instruments and creating backgrounds from a toolbox of graphical elements.

RemoteCommGuide

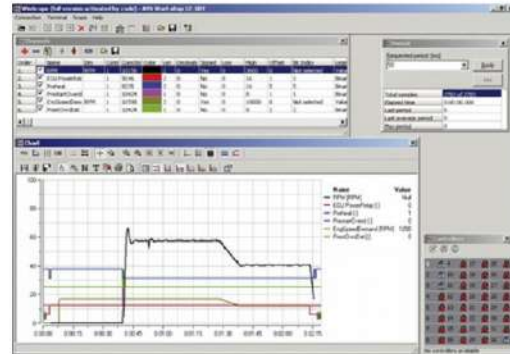
Communication Guide for Most
ComAp Gen-Set Controllers



- > RemoteCommGuide is interactive communication guide for most ComAp gen-set controllers. It is a part of ComAp PC Suite
- > This useful tool helps you to easily select the proper gen-set controller according to required application and communications
- > RemoteCommGuide solves problem with projecting of communications and checks the wiring and settings during the commissioning
- > Easier finding of required information
- > See only relevant information
- > Automatically check the accessibility of required communications
- > Wizard for first steps with RemoteCommGuide makes easier to understand the logic of SW
- > Make Remote communications more understandable – need of less technical support
- > Information about all controllers in one place together

WinScope

Graphical Controller
Monitoring Software



- > Monitoring and archiving of ComAp controllers' parameters and values
- > View of actual/historic trends in the controller
- > On-line change of controller's parameters for easy regulator setup
- > Supports connection to all Intell-line controllers
- > Enables parameter setting of ECON and INCON controllers
- > Enables parameter setting of EMCON5 controller
- > The software is a part of Installation Packages of ComAp gen-set and engine controllers
- > Without any activation WinScope works in Demo Mode, where there you can only browse previously saved data
- > Basic version allows monitoring of only one controller and max 4 channels

The heart of smart control

www.comap-control.com

Please note: the information contained within this brochure was correct at the time of printing and is subject to change without notice.

02/2019