

# PRODUCT GUIDE



Electronic edition – associated products



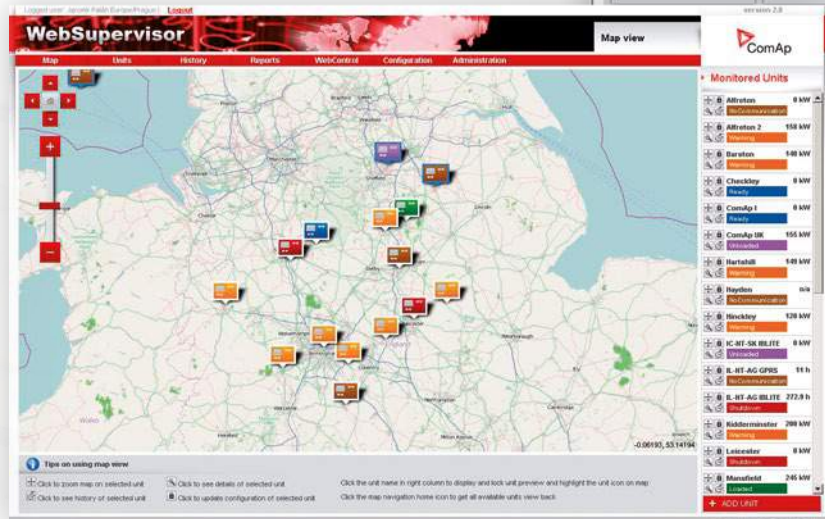


Take control of your gen-set or engine using the free remote monitoring feature

# “Smart and easy”

made possible by ComAp unique technology.





**AVAILABLE IN VARIOUS LANGUAGES**

**NEW FEATURE!**  
Customise your .xls reports to save time



**AirGate**  
Simply connected

**LOCATE**  
Simply here

**WebSupervisor**  
ComAp WSV



Available on the App Store

ANDROID APP ON Google play

R E M O T E C O M M S M A D E E A S Y

# Control is everything

ComAp is an innovative, creative company bringing power control solutions to industrial applications. Our range of power control products and accessories provide our customers with class-leading technology, ease of use, and environmental benefits.

Our products are in use all over the world, in many different situations: from tyre recycling plants in Turkey, to tomato growers in Australia; from oil rigs in Russia, to a soda factory in Ghana; ComAp products are a reliable and cost effective solution for the world's power control needs.



**Spain**  
Ferry



**United Kingdom**  
Data Center



**Ghana**  
Power Plant



**Nigeria**  
Pasta Factory



**USA**  
Manufacturing Facility



**Mexico**  
Warehouses



**Colombia**  
Oil Field



**Ecuador**  
Cruise Ship



**Peru**  
Ore Mine



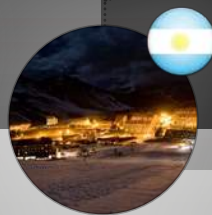
**Brazil**  
Paper Factory



**Bolivia**  
Power Plant



**Chile**  
Casino



**Argentina**  
Ski Centre



**Egypt**  
Cement Production Plant





**France**  
Ship Elevator



**Switzerland**  
Airport



**Poland**  
Hotel



**Kosovo**  
Telecom Towers



**Russia**  
Oil Field



**Denmark**  
Bank



**Finland**  
Cable Laying Vessel



**Italy**  
Hospital



**Romania**  
Oil Rig



**United Arab Emirates**  
Rental Company



**Mongolia**  
Diesel Power Station



**China**  
Nuclear Power Plant



**Singapore**  
F1 Singapore Grand Prix



**Saudi Arabia**  
Water Treatment Plant



**India**  
Plant Nursery



**Indonesia**  
Coal Mine



**Australia**  
Gas Field



**New Zealand**  
Vineyards and Orchards



## WELCOME TO OUR PRODUCT GUIDE

The ComAp Product Guide is more than just an overview of ComAp products – it's an illustration of the continued commitment of the many dedicated people at ComAp who continually develop new ways to support an ever-growing range of solutions for an ever-increasing global customer base.

As a result the guide is bigger and better than ever. It promises a flexible approach to engine and generator management through solutions deeply embedded with the latest web based communication technology to bring unrivalled efficiency, convenience and cost saving to standard operations. We've also extended our range and capability further with updated software, touch screen technology, bi-fuel packages and a family of compact and cost-effective control units.

Beyond innovative products, ComAp customers can be sure of outstanding service. Our global distribution network is dedicated to delivering an excellent experience with fully trained and knowledgeable partners providing responsive technical support where and when it's needed anywhere in the world.

We hope you find the guide useful and continue to be an important part of our future. Hearing what you think is very important to us, so if you would like to share your experience of using our products please let us know by emailing your story to [info@comap.cz](mailto:info@comap.cz).

Regards  
Libor Mertl – Managing Director

## CONTENT

### Power Generation 7

Gen-set controllers 8

Generator controllers 30

ATS controllers 32

### Mains Protections 35

### Drive Power 39

### Bi-fuel Products 53

### Associated Products 57

Accessories 58

PC tools 72

Battery chargers 78

Electronic potentiometers 78

### Applications 79

### About ComAp 121



# Associated Products



58

**Accessories**

72

**PC tools**

78

**Battery chargers**

78

**Electronic potentiometers**

# InteliVision 5

## NEW GENERATION 5,7" COLOUR DISPLAY UNIT

New generation colour display panel for localized visualisation and intended for shorter distances (up to 2 meters) from the controller.

InteliVision 5 is compatible with the following product line of controllers: InteliGen<sup>NT</sup>, InteliSys<sup>NT</sup> and InteliMains<sup>NT</sup>.



Plug and play interface



Front IP65



ScreenEditor



Short distance



Tier 4



Configurable soft keys

### TYPICAL APPLICATION:

### Rental sets

see page 90

- 5,7" colour TFT display with 320×240 pixel resolution
- Local display intended for shorter distances (up to 2 meters) from the controller
- Plug and play operation (auto configuration based on controller application)
- Direct connection to the controller (converters are not needed)
- Simple, fast and intuitive control
- Easy drag and drop screen configuration in graphical editor
- Fast access to important data
- Five configurable soft keys
- Support of Tier 4 icons
- Mounting screw available at the rear face of InteliVision 5 to mount a compatible controller
- Same language support as the controller including graphic languages
- Communication connection via RS485
- Same cut out as InteliGen<sup>NT</sup>
- Operating temperature: -40 to +70°C
- Face is sealed to IP65
- EMC, climatic and mechanical tests
- CE, UL certification

## Denmark

### Hvidovre Hospital



Hvidovre Hospital is located just outside of Copenhagen. The hospital is one of Denmark's largest, with over 40,000 patients admitted each year. It has 35 different departments spread over 300,000 square meters of land. This posed quite a challenge when installing a back-up power system for the hospital complex. The backup system included five FG Wilson diesel generators, all equipped with InteliVision 5 displays for monitoring and control. Although the entire backup system was monitored from a control room using an InteliVision 17Touch, an InteliVision 5 display attached to each generator allowed for individual monitoring of each generator, to ensure the generators were all available for use, should an emergency arise.







# InteliVision 5 CAN

## NEW GENERATION 5,7" COLOUR DISPLAY UNIT WITH CAN BUS INTERFACE

New generation remote display unit for InteliDrive DCU and InteliDrive Mobile controllers.

Designed as a simple, easy-to-use Plug and Play solution. Simpler, faster and more comfortable control for the user. More information in less time.



Galvanically separated CAN interface



Plug and play interface



Front&Rear IP65



ScreenEditor



Tier 4



Configurable soft keys



Backlit dimming analog input



Horn Binary Output



Internal buzzer

- 5,7" colour TFT display, 320×240 pixel resolution, anti-glare front coating
- Same cut out as standard ComAp controllers, e.g. InteliDrive DCU
- Auto configuration based on controller application
- Same language support as the master controller including graphic languages
- Fast access to important data
- Five configurable soft keys
- Galvanically separated CAN interface
- Binary output for horn/buzzer control
- Sealed to IP65
- 8-pins Harness connection on rear side
- Drag & Drop customer screen configuration
- Analog input to control display backlight intensity

### TYPICAL APPLICATION:

**Forwarder**

see page 116

# InteliVision 5 CAN Backlit

## NEW GENERATION 5,7" COLOUR DISPLAY UNIT WITH CAN BUS INTERFACE AND BACKLIT BUTTONS

New generation remote display unit for InteliDrive DCU, InteliDrive Mobile, InteliGen<sup>NT</sup> and InteliSys<sup>NT</sup> marine certified controllers and controllers with installed GeCon software.

Designed as a simple, easy-to-use Plug and Play solution. Simpler, faster and more comfortable control for the user. More information in less time.



Galvanically separated CAN interface



Plug and play interface



Front&Rear IP65



ScreenEditor



Tier 4



Configurable soft keys



Backlit dimming analog input



Binary output



Internal buzzer



Backlit

In addition to InteliVision 5 CAN's specification, the InteliVision 5 CAN Backlit model also has:

- Backlit buttons

### TYPICAL APPLICATION:

**Ship power management system**

see page 106

# InteliVision 8

## 8" COLOUR DETACHABLE DISPLAY UNIT

InteliVision 8 is a colour display unit designed as a simple, easy-to-use Plug and Play solution and delivers high visibility of all engine data, monitoring information and trend history in a bright, colorful and forward looking design. It can be used for either InteliGen<sup>NT</sup>, InteliSys<sup>NT</sup>, InteliMains<sup>NT</sup>, InteliDrive DCU and InteliDrive Mobile.

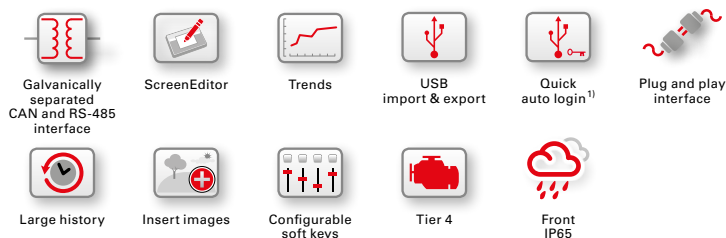
InteliVision 8 comes with the large high-resolution colour TFT display, which helps visibility and definition of onscreen information. The control interface has user-friendly, intuitive active buttons – giving users access to more information in less time. InteliVision 8 boasts the unique TRENDS monitoring as a standard feature, helping you evaluate past events easily on one screen. It offers a site data storage using a USB stick and permits adding external pictures for customization of screens.

InteliVision 8 includes ComAp's standard communication interface using RS232/485 and CAN bus communication. Designed to be mounted in either a monitoring or engine room, InteliVision 8 gives complete access to all control functions when connected to control unit.

### TYPICAL APPLICATION:

**Standby system with load shedding – advanced displays**

see page 92



- 8" colour TFT display with resolution of 800x600 pixels
- Auto configuration based on controller application
- Controlled by active buttons
- Comes with new TRENDS monitoring screen
- USB flash disk as file storage (export trends, history, firmware and archive to USB flash disk)
- User's pictures import to measurement screens
- Easy Drag & Drop screen configuration by customer in new graphical editor
- Four configurable soft keys at the bottom of the display
- Adaptive and color alarm list
- Quick auto login with USB stick
- Support of Tier 4 icons
- Allows full monitoring of one controller (in case of more controllers on CAN it is possible to switch over among controllers monitoring by change of CAN address)
- Connection via of RS232/485 and CAN bus
- Designed to be mounted in both monitoring and engine room
- Operating temperature from -20°C to +70°C
- Face is sealed to IP65
- EMC, climatic and mechanical tests
- CE, UL and ULC certification

# InteliVision 8 Marine

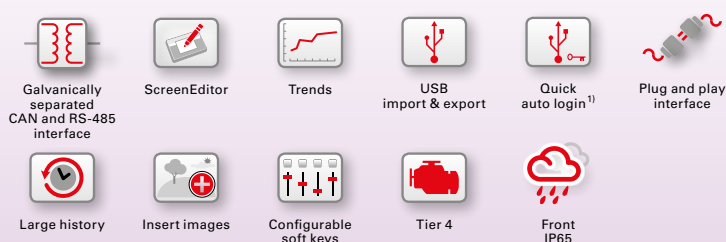
## MARINE APPROVED 8" COLOUR DETACHABLE DISPLAY UNIT

InteliVision 8 Marine is a marine certified colour display unit for either InteliGen<sup>NT</sup>, InteliSys<sup>NT</sup>, InteliMains<sup>NT</sup> or InteliDrive DCU and InteliDrive Mobile controllers. It is designed as a simple, easy-to-use Plug and Play solution.

### TYPICAL APPLICATION:

**Ship power management system**

see page 106



- The InteliVision 8 Marine has all the same features as InteliVision 8 and has GL, ABS, DNV, RMR, CCS and LR marine certifications.



1) This feature is compatible with InteliSys<sup>NT</sup> / InteliGen<sup>NT</sup> / InteliMains<sup>NT</sup> controllers.





# InteliVision 17Touch

## 17" TOUCHSCREEN DISPLAY UNIT

The new InteliVision 17Touch is a seventeen-inch touchscreen display unit for use with the range of ComAp gen-set and generator controllers. It features an extended operating temperature range, and UL certification for use in complex installations. Optimized for ease of use, installation and configuration, the InteliVision 17Touch allows the monitoring and control of multiple controllers from a single screen, with the option of directly controlling gen-sets or breakers.

The InteliVision 17Touch comes with SCADA software enabling users to freely configure the screen with different on-screen components. There is also IGS-LOG software preinstalled and it is free of charge.

The InteliVision 17Touch is designed to mount into a panel in a power distribution centre or mount onto a wall using the VESA standard mount (optional). Communication is available via standard interfaces such as RS232, Ethernet and USB.

### TYPICAL APPLICATION:

#### Combined heat and power (CHP) – cogeneration

see page 96



- UL Certification
- Extended temperature range (from -20°C up to 60°C)
- Front panel protection IP65 NEMA4 standard
- Robust, industrial design with passive cooling
- LED Backlit, high resolution screen
- Two easy access USB ports
- Over and under voltage protection
- Complimentary IGS-LOG included
- Monitor and control any connected ComAp controller
- Monitor and Control all GCBs and MCBs
- Change set-points from one screen
- View history logs from all connected controllers
- Full-screen, and configuration modes
- Screen can be locked with a PIN

Watch the video from the application with this product!



## Finland

### Meriaura Ltd



Specialist deep sea cable laying vessel, the MV Aura, has been refurbished to enhance its ability to perform its demanding duties installing subsea energy cable for renewable energy projects at sea.

Meriaura Ltd, the owner of MV Aura, is a Finnish shipping company specialising in demanding cargo projects and transporting industrial bulk and raw materials. For its work in support of renewable energy projects MV Aura is part of its fleet of Cable laying vessels covering both deep water and shallow water cable laying and trenching capabilities.

The ships' systems has been fitted with a dynamic positioning system and two additional bow thrusters, two new diesel engines, deck cranes and also accommodation block with capability of housing up to 36 people. This modern and environmentally friendly vessel is designed to operate globally and can be utilised for various tasks including transport of demanding project cargo such as offshore wind farm structures. As its area of deployment includes the Baltic Sea area, the vessel is also capable of operating as an Icebreaker giving it year round capability to perform its duties. This wide scope of capability is further enhanced into an environmental protection role; MV Aura is also capable of operating in oil spill response activities. The main engines of the vessel can use environmentally friendly bio oil as fuel.

The scale of the refurbishment means that MV Aura has much greater demands for electricity than originally designed, so this area of the vessel was also significantly upgraded and Tapimec Oy (the official ComAp distributor in Finland) was pleased to be able to supply the system which powered it all.

Machinery Oy supplied three gen-sets in shipping containers, one switchboard container and one fuel container. In each gen-set container there is one 60L Cummins Marine diesel generator, a QSK60-D (with a power rating of 2095HP in Prime use) and one PI734G2 Stamford generator. Each container has a power output of 1800 kVA. In a normal situation, two gensets are running and the third is on stand-by. There is also a mode for load shedding.

# IL-NT GPRS

## INTEGRATED GSM MODEM AND INTERNET GPRS

IL-NT GPRS is an integrated GSM modem and Internet GPRS solution for IntelliLite<sup>NT</sup> and IntelliATS<sup>NT</sup> controllers. It offers a unique solution for wireless monitoring and control over single or whole fleet of equipment. The main benefits include high reliability for your application, instant alarm events notification over SMS, on-line data access on Internet (using WebSupervisor), periodic data collecting in Excel format and SMS control.

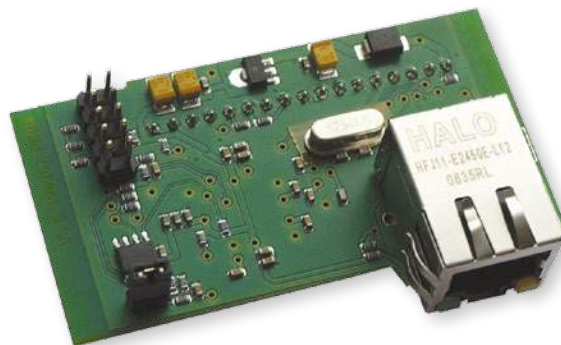


- Wireless integrated solution
- Quick & easy installation
- Brings enhanced application reliability
- Support of WebSupervisor – online cloud-based system monitoring & control
- Periodic data collection in Excel format
- Instant alarm SMS notification
- System control over SMS
- GSM modem
- GPRS modem
- Quad Band 850/900/1800/1900 MHz
- GPRS multi-slot class 10
- CSD up to 14.4 kbps
- TCP/IP communication over GPRS
- Excellent price/performance ratio

# IB-Lite

## INTERNET / ETHERNET MODULE INCLUDING WEB SERVER

The IB-Lite module is a plug-in communication module with ethernet interface developed for IntelliLite<sup>NT</sup> and IntelliATS<sup>NT</sup>. Ethernet interface allows fast remote connection of LiteEdit or IntelliMonitor to the controller from all the world through the Internet network, whereas all functions work the same way as when connected through a serial cable. The module also allows the controller to be integrated into a building management system using the Modbus/TCP or SNMP protocol. Simple web-based interface will allow basic monitoring and adjustment even those, who do not have LiteEdit or IntelliMonitor, just using their web browsers.



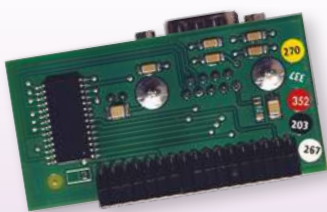
- 10/100 MBit ethernet interface in RJ45 socket
- Web interface for basic monitoring and adjustment of the controller
- ComAp/TCP protocol for remote access from LiteEdit or IntelliMonitor
- MODBUS/TCP, SNMP protocols for integration of the controller into building management systems or other remote monitoring purposes
- Sending of active e-mails
- Web-based configuration and firmware update of the module
- Simply connected using AirGate technology





## IL-NT RS232

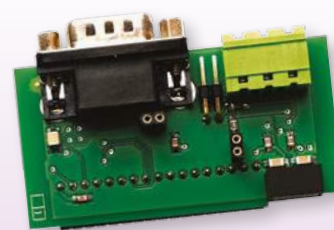
### RS232 EXTENSION BOARD



- Detachable plug-in module
- RS232 interface
- Support for direct connection to PC accessories via serial cable, GSM modem, Modbus-RTU

## IL-NT RS232-485

### DUAL PORT EXTENSION BOARD



- Detachable plug-in module
- RS232 and RS485 interfaces
- Support for direct connection to PC accessories via serial cable, GSM modem, Modbus-RTU (Building management, ECU Link)

## IL-NT S-USB

### SERVICE USB MODULE



- Detachable easily plug-in/plug-out module
- USB interface
- For service purposes

## IL-NT AOUT8

### ANALOG OUTPUTS FOR PWM GAUGES MODULE



- 8 programmable analog PWM outputs
- Resolution 10 bits
- For indication of almost every measured and computed value
- May indicate output power, RPM, voltage, current, etc.
- Support VDO style gauges
- Applicable to IntelliATS<sup>NT</sup> version 2.4 and higher

## IL-NT BIO8

### BINARY INPUT/OUTPUT MODULE



- Detachable plug-in module
- 8 binary inputs or outputs
- Arbitrary combination of inputs/outputs

## IGL-RA15<sup>1)</sup>

### REMOTE ANNUNCIATOR



- 15 programmable LEDs with configurable colors either red, green or yellow
- Customizable labels
- Local horn output with adjustable alarm period
- Lamp test function
- Connection via CAN bus

## IC-NT CT-BIO7<sup>1)</sup>

### HYBRID CURRENT INPUT & BINARY INPUT/OUTPUT EXTENSION MODULE



- Hybrid current input & binary input/output module
- One additional AC current (CT) measuring input for Earth Fault Current protection
- Up to 7 configurable additional binary inputs or outputs

## IG-IOM<sup>1)</sup>

### ANALOG/BINARY INPUT/OUTPUT MODULE



- 8 configurable binary inputs and 8 configurable binary open collector outputs
- 4 configurable analog inputs and 1 analog output
- LEDs indicate the state of binary input/output
- Connection to the controller with IOM cable (2 meters)
- Resistance range 0–2400 Ohm
- Analog outputs 0–20 mA

<sup>1)</sup>This module is not compatible with IntelliATS<sup>NT</sup>.

# IL-NT GPRS

## INTEGRATED GSM MODEM AND INTERNET GPRS

IL-NT GPRS is an integrated GSM modem and Internet GPRS solution for IntelliCompact<sup>NT</sup> and MainsCompact<sup>NT</sup> controllers. It offers a unique solution for wireless monitoring and control over single unit or whole fleet of equipment. The main benefits include high reliability for your application, instant alarm events notification over SMS, on-line data access on Internet (using WebSupervisor), periodic data collecting in Excel format and SMS control.

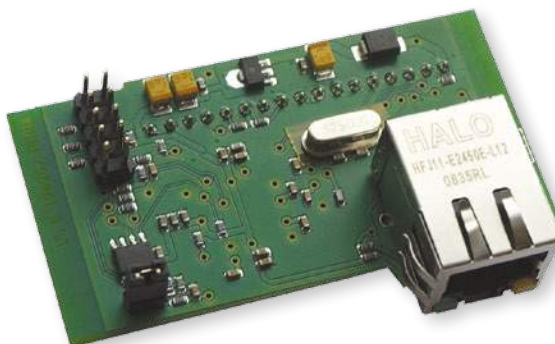


- GSM Modem function for dial-up connection
- GPRS support for wireless Internet connection
- WebSupervisor system support for cloud-based monitoring and control of one or multiple controllers at the same time
- AirGate technology support for easy connection over GPRS, overcomes many of the issues traditionally experienced with Internet connection to embedded systems
- Locate support – gen-set/engine locating on map in WebSupervisor, tracking of movement
- Remote access from LiteEdit or IntelliMonitor
- Mobile and wireless solution
- Automatic SMS message on alarms or events
- SMS control of gen-set/engine – available at some controllers

# IB-Lite

## INTERNET / ETHERNET MODULE INCLUDING WEB SERVER

The IB-Lite module is a plug-in communication module with ethernet interface developed for IntelliCompact<sup>NT</sup> and MainsCompact<sup>NT</sup>. The ethernet interface allows fast remote connection of LiteEdit or IntelliMonitor to the controller from all the world through the Internet, whereas all functions work the same way as when connected through a serial cable. The module also allows the controller to be integrated into a building management system using the Modbus/TCP or SNMP protocol. Simple web-based interface allows basic monitoring and adjustment even those, who do not have LiteEdit or IntelliMonitor, just using their web browsers.



- 10/100 MBit ethernet interface in RJ45 socket
- Web interface for basic monitoring and adjustment of the controller
- ComAp/TCP protocol for remote access from LiteEdit or IntelliMonitor
- MODBUS/TCP, SNMP protocols for integration of the controller into building management systems or other remote monitoring purposes
- Sending of active e-mails
- Web-based configuration and firmware update of the module
- Simply connected using AirGate technology





## IC-NT CT-BIO7

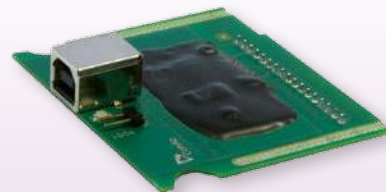
### HYBRID CURRENT INPUT & BINARY INPUT/OUTPUT EXTENSION MODULE



- Hybrid current input & binary input/output module
- Applicable to IntelliCompact<sup>NT</sup> SPtM version 1.2 and higher
- Applicable to IntelliCompact<sup>NT</sup> MINT version 1.3 and higher
- One additional AC current (CT) measuring input for Earth Fault Current protection or Peak Load Shaving function (IntelliCompact<sup>NT</sup> SPtM only)
- Up to 7 configurable additional binary inputs or outputs

## IL-NT S-USB

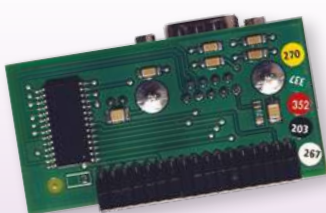
### SERVICE USB MODULE



- Detachable easily plug-in/plug-out module
- USB interface
- For service purposes

## IL-NT RS232

### RS232 EXTENSION BOARD



- Detachable plug-in module
- RS232 interface
- Support for direct connection to PC accessories via serial cable, GSM modem, Modbus-RTU

## IL-NT AOUT8

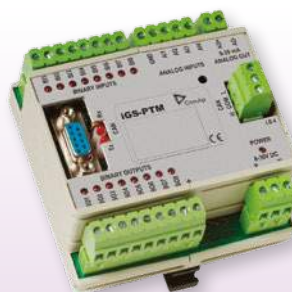
### ANALOG OUTPUTS FOR PWM GAUGES MODULE



- 8 programmable analog PWM outputs
- Resolution 10 bits
- For indication of almost every measured and computed value
- May indicate output power, RPM, voltage, current, etc.
- Support VDO style gauges

## IGS-PTM

### ANALOG/BINARY INPUT/OUTPUT MODULE



- 8 configurable binary inputs and 8 configurable binary open collector outputs
- 4 configurable analog inputs and 1 analog output
- LEDs indicate the state of binary input/output
- Measures the values from Pt100 and Ni100 sensors
- Analog inputs have the resistance range 0–250 Ohm, voltage range 0–100 mV, current range 0–20 mA – selectable via jumper
- Analog output 0–20 mA
- Connection via CAN bus

## IG-AVR<sup>1)</sup>

### AVR INTERFACE



- Interface ensuring voltage matching between IntelliGen<sup>NT</sup> or IntelliSys<sup>NT</sup> controller and generator AVR
- 4 kV electric insulation between controller and AVR
- DIN rail design

## IGL-RA15

### REMOTE ANNUNCIATOR



- 15 programmable LEDs with configurable colors either red, green or yellow
- Customizable labels
- Local horn output with adjustable alarm period
- Lamp test function
- Connection via CAN bus

## InternetBridge-NT

### COMMUNICATION MODULE WITH CELLULAR/ETHERNET CONNECTION



- Wireless high speed GPRS/UMTS modem built in
- Supports all cellular packet data systems from GPRS to HSPA (2.5G to 3.75G)
- Full Multiband support – modem works globally
- Ethernet wired connection for local LAN connection
- Single module can be used for multiple controllers on the same site (connected via CAN or RS485)
- MODBUS/TCP, SNMP protocol support – direct connection to building management and other systems

1) This module is not compatible with MainsCompact<sup>NT</sup>.

# InternetBridge-NT

## COMMUNICATION MODULE WITH CELLULAR/ETHERNET CONNECTION

The InternetBridge-NT module allows efficient connection to the Internet for one or more ComAp controllers, either by Ethernet cable or by built in 3.75G Cellular modem.

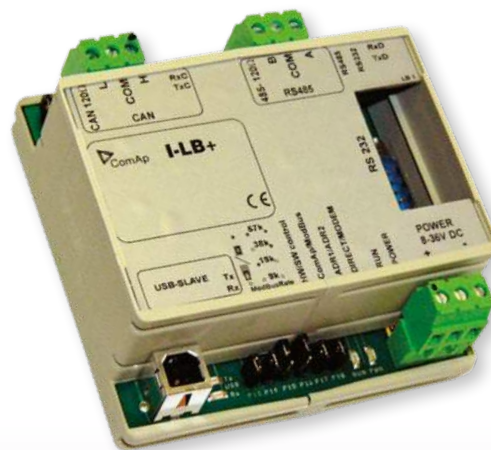


- Wireless high speed GPRS/UMTS modem built in
- Supports all cellular packet data systems from GPRS to HSPA (2.5G to 3.75G)
- Full Multiband support – modem works globally
- Ethernet wired connection for local LAN connection
- Single module can be used for multiple controllers on the same site (connected via CAN or RS485)
- MODBUS/TCP, SNMP protocol support – direct connection to building management and other systems
- Includes ComAp AirGate technology – easy plug-and-play connection anywhere (no fixed IP needed)
- Designed for WebSupervisor – fully supported by ComAp's cloud-based remote monitoring system
- Global positioning system built in – keep track of your equipment
- Durable metal housing with DIN rail mount
- SIM card holder access without disassembly
- Web server for monitoring and adjustment of attached controllers
- Wide range 8–36 VDC supply voltage
- Works with ComAp monitoring software in either direct connection or via AirGate technology

# I-LB+

## LOCAL BRIDGE

I-LB+ is a bridge for applications with IntelliGen<sup>NT</sup>, IntelliSys<sup>NT</sup> and IntelliMains<sup>NT</sup> controllers for local or remote monitoring and control.



- Direct, modem or USB connection to multiple controllers
- RS232/ RS485/Modbus support for direct connection
- Analog/GSM/ISDN modem support





## IS-AIN8

### ANALOG INPUT MODULE

- 8 configurable analog inputs
- Precision of inputs is 1%
- Accepts 2 or 3 wire resistive, current and voltage measurement
- User and predefined sensor characteristics (Pt100, Pt1000, Ni100, Ni1000, thermocouple type J/K/L, 0/4–20 mA, 0–10 V, etc.)
- Up to 10 units can be connected to 1 controller

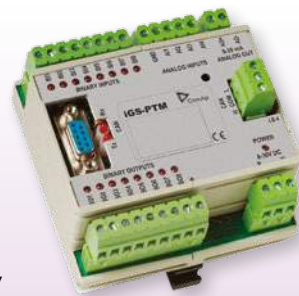


**IS-AIN8TC** – Module for Thermocouple Measurement available

## IGS-PTM

### ANALOG/BINARY INPUT/OUTPUT MODULE

- 8 configurable binary inputs and 8 configurable binary open collector outputs
- 4 configurable analog inputs and 1 analog output
- LEDs indicate the state of binary input/output
- Analog output 0–20 mA
- Connection via CAN bus
- Up to 4 units can be connected to 1 controller
- Analog inputs have the resistance range 0–250 Ohm, voltage range 0–100 mV, current range 0–20 mA – selectable via jumper



## Inteli IO8/8

### BINARY INPUTS/OUTPUTS AND ANALOG OUTPUTS MODULE

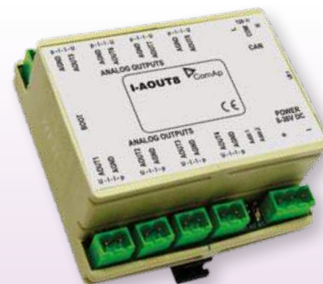
- Two options of configuration: 8 binary inputs, 8 binary outputs + 2 analog outputs or 16 binary inputs, 0 binary outputs + 2 analog outputs
- Options: Binary inputs: Pull up or Pull down
- Binary outputs: high side switch or low side switch
- Analog output: voltage/current/PWM
- Up to 12 units can be connected to 1 controller



## I-AOUT8

### ANALOG OUTPUT EXTENSION MODULE

- 8 configurable analog outputs
- Outputs are configurable to: 0–10 VDC or 0/4–20 mA range or (1,2 kHz) PWM
- Up to 4 units can be connected to 1 controller



## Inteli AIN8

### ANALOG INPUT MODULE

- 8 configurable analog inputs
- 1 impulse/RPM input
- Precision of inputs is 1%
- Accepts 2 or 3 wire resistive, current and voltage measurement
- User and predefined sensor characteristics (Pt100, Pt1000, Ni100, Ni1000, 10 k $\Omega$ , 0/4–20 mA, 0–10 V, lambda probes support)
- Up to 10 units can be connected to 1 controller



## Inteli AIN8TC

### ANALOG INPUT MODULE

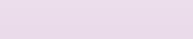
- 8 configurable analog inputs
- Module is determined for temperature measurement with thermocouples – thermocouple type J/K/L
- Up to 10 units can be connected to 1 controller



## Inteli AIO9/1

### ANALOG INPUT/OUTPUT MODULE

- 4 inputs for voltage DC measurement  $\pm 65$  V
- 4 inputs for current DC measurement (via shunt)  $\pm 75$  mV (possibility to connect thermocouple type J/K/L)
- 1 input for RTD 0–2400  $\Omega$
- 1 analog output (0–10V, PWM, 0–20 mA)
- Up to 5 units can be connected to 1 controller



## IGL-RA15

### REMOTE ANNUNCIATOR

- 15 programmable LEDs with configurable colors either red, green or yellow
- Customizable labels
- Local horn output with adjustable alarm period
- Lamp test function
- Connection via CAN bus
- Up to 4 units can be connected to 1 controller



# IL-NT GPRS

## INTEGRATED GSM MODEM AND INTERNET GPRS

IL-NT GPRS is an integrated GSM modem and Internet GPRS solution for IntelliDrive Lite controllers. It offers a unique solution for wireless monitoring and control over single or whole fleet of equipment. The main benefits include high reliability for your application, instant alarm events notification over SMS, on-line data access on Internet (using WebSupervisor), periodic data collecting in Excel format and SMS control.

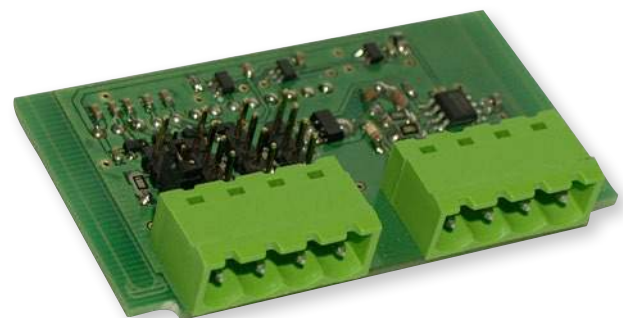


- GSM Modem function for dial-up connection
- GPRS support for wireless Internet connection
- WebSupervisor system support for cloud-based monitoring and control of one or multiple controllers at the same time
- AirGate technology support for easy connection over GPRS, overcomes many of the issues traditionally experienced with Internet connection to embedded systems
- Locate support – gen-set/engine locating on map in WebSupervisor, tracking of movement
- Remote access from LiteEdit or IntelliMonitor
- Mobile and wireless solution
- Automatic SMS message on alarms or events
- SMS control of gen-set/engine – available at some controllers

# IL-NT AIO

## ANALOG INPUT/OUTPUT MODULE

IL-NT AIO is an extension board which increases the number of analog inputs and outputs of IntelliDrive Lite controllers.



- Extension plug-in module increasing the number of analog inputs and output of selected engine controllers
- 4 configurable analog inputs for the sensors: in range 0–2400 ohm; 0/4–20 mA; 0–4 VDC
- 1 configurable analog output for the sensor: in range 0/4–20 mA; 0–4,5 VDC; PWM 5 V/500 Hz

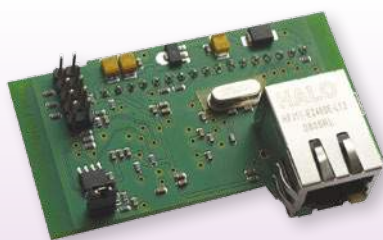




## IB-Lite

INTERNET / ETHERNET  
MODULE INCLUDING  
WEB SERVER

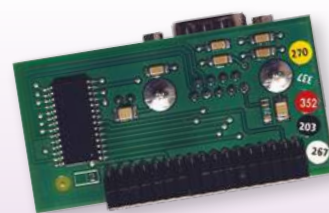
- 10/100 MBit ethernet interface in RJ45 socket
- Web interface for basic monitoring and adjustment of the controller
- ComAp/TCP protocol for remote access from LiteEdit or IntelliMonitor
- MODBUS/TCP protocols for integration of the controller into building management systems or other remote monitoring purposes
- Sending of active e-mails



## IL-NT RS232

RS232 EXTENSION BOARD

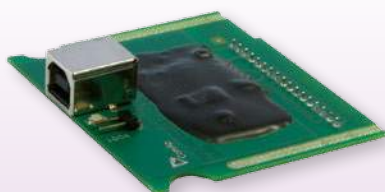
- Detachable plug-in module
- RS232 interface
- Support for direct connection to PC accessories via serial cable, GSM modem, Modbus-RTU



## IL-NT S-USB

SERVICE USB MODULE

- Detachable easily plug-in/plug-out module
- USB interface
- For service purposes



## IL-NT BIO8

BINARY INPUT/OUTPUT  
MODULE

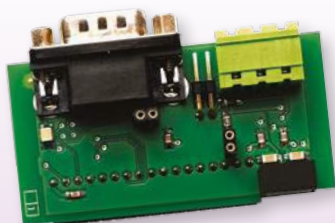
- Detachable plug-in module
- 8 binary inputs or outputs
- Arbitrary combination of inputs/outputs



## IL-NT RS232-485

DUAL PORT  
EXTENSION BOARD

- Detachable plug-in module
- RS232 and RS485 interfaces
- Support for direct connection to PC accessories via serial cable, GSM modem, Modbus-RTU (Building management, ECU Link)



## IL-NT AOUT8

ANALOG OUTPUTS FOR PWM  
GAUGES MODULE

- 8 programmable analog PWM outputs
- Resolution 10 bits
- For indication of almost every measured and computed value
- May indicate output power, RPM, voltage, current, etc.
- Support VDO style gauges



## IGL-RA15

REMOTE ANNUNCIATOR

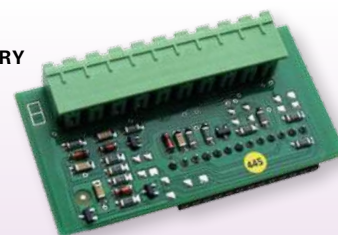
- 15 programmable LEDs with configurable colors either red, green or yellow
- Customizable labels
- Local horn output with adjustable alarm period
- Lamp test function
- Connection via CAN bus



## IL-NT IO1

ANALOG OUTPUT AND BINARY  
INPUT MODULE

- Extension plug-in module increasing the number of analog outputs and binary inputs of selected engine controllers
- 4 configurable analog outputs (output range: 0 to +VBatt  $\pm 1V$ )
- 4 configurable binary inputs



# ID-RPU<sup>1)</sup>

## REDUNDANT PROTECTION UNIT

ID-RPU is a redundant engine protection unit for IntelliDrive DCU Marine controllers.



- Backup module for marine engines
- Automatic switchover between primary and secondary power supply
- Monitors function of main controller unit
- In case of main unit failure switches to the backup mode and protects the engine
- RPM input with hardwired overspeed protection
- 5 shutdown channels with Broken Wire detection
- Fuel and Stop solenoids with BW detection

# ID-SCM<sup>2)</sup>

## SPEED CONTROL MODULE

ID-SCM is an interface module for IntelliDrive DCU controllers for full support of internal PLC.



- RPM1, RPM2: Inputs for frequency measuring – up to 8 kHz
- IMP1, IMP2: Inputs for integral (consumption) measuring up to 60 Hz
- AOUT1, AOUT2: Analog outputs 0–10 VDC or 0–20 mA
- Speed Governor Output: 10 VDC or 10 VDC via 10 kΩ or PWM (1,6 kHz)
- The module is mounted directly on IntelliDrive DCU controller body

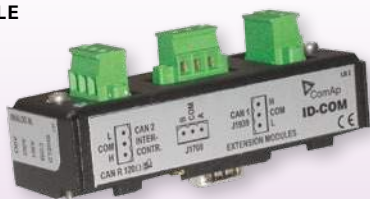
1) This module is only compatible with IntelliDrive DCU Marine controllers  
2) This module is only compatible with IntelliDrive DCU controllers





## ID-COM

### COMMUNICATION MODULE



- Interface for CAN1 Extension and J1939 modules
- Interface for CAN2 Inter-controller and I-RD-CAN modules
- Interface for J1708 redundancy line



## InternetBridge-NT

### COMMUNICATION MODULE WITH CELLULAR/ETHERNET CONNECTION



- Wireless high speed GPRS/UMTS modem built in
- Supports all cellular packet data systems from GPRS to HSPA (2.5G to 3.75G)
- Full Multiband support – modem works globally
- Ethernet wired connection for local LAN connection
- Single module can be used for multiple controllers on the same site (connected via CAN or RS485)
- MODBUS/TCP, SNMP protocol support – direct connection to building management and other systems



## IS-AIN8

### ANALOG INPUT MODULE



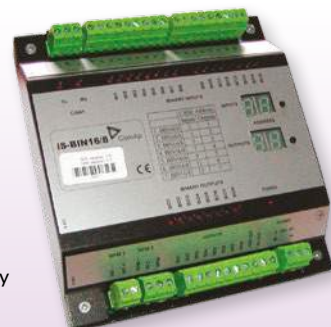
- 8 configurable analog inputs
- Precision of inputs is 1%
- Accepts 2 or 3 wire resistive, current and voltage measurement
- User and predefined sensor characteristics (Pt100, Pt1000, Ni100, Ni1000, thermocouple type J/K/L, 0/4–20 mA, 0–10 V, etc.)
- Up to 4 units can be connected to 1 controller



**IS-AIN8TC** – Module for Thermocouple Measurement available

## IS-BIN16/8

### BINARY INPUT/OUTPUT MODULE



- 16 configurable galvanically separated inputs
- 8 configurable N.O. or N.C. relays outputs
- LEDs indicate the state of binary input/output
- Up to 4 units can be connected to 1 controller



## Inteli AIN8

### ANALOG INPUT MODULE



- 8 configurable analog inputs
- 1 impulse/RPM input
- Precision of inputs is 1%
- Accepts 2 or 3 wire resistive, current and voltage measurement
- User and predefined sensor characteristics (Pt100, Pt1000, Ni100, Ni1000, 10 kΩ, 0/4–20 mA, 0–10 V, lambda probes support)
- Up to 10 units can be connected to 1 controller



## Inteli IO8/8

### BINARY INPUTS/OUTPUTS AND ANALOG OUTPUTS MODULE

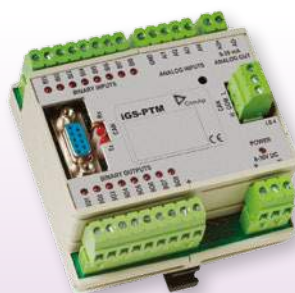


- Two options of configuration: 8 binary inputs, 8 binary outputs + 2 analog outputs or 16 binary inputs, 0 binary outputs + 2 analog outputs
- Options: Binary inputs: Pull up or Pull down
- Binary outputs: high side switch or low side switch
- Analog output: voltage/current/PWM
- Up to 12 units can be connected to 1 controller



## IGS-PTM

### ANALOG/BINARY INPUT/OUTPUT MODULE



- 8 configurable binary inputs and 8 configurable binary open collector outputs
- 4 configurable analog inputs and 1 analog output
- LEDs indicate the state of binary input/output
- Measures the values from Pt100 and Ni100 sensors
- Analog inputs have the resistance range 0–250 Ohm, voltage range 0–100 mV, current range 0–20 mA – selectable via jumper
- Up to 4 units can be connected to 1 controller



## IGL-RA15

### REMOTE ANNUNCIATOR



- 15 programmable LEDs with configurable colors either red, green or yellow
- Customizable labels
- Local horn output with adjustable alarm period
- Lamp test function
- Connection via CAN bus
- Up to 4 units can be connected to 1 controller





# LiteEdit

## PC CONFIGURATION AND MONITORING TOOL

LiteEdit is a PC configuration and monitoring tool for IntelliATS<sup>NT</sup>, IntelliLite<sup>NT</sup>, IntelliCompact<sup>NT</sup>, MainsCompact<sup>NT</sup>, IntelliDrive Lite and IntelliPro controllers.



Simply connected



- Remote control, monitoring and On-line/Off-line parameters adjustment
- Controller and extension modules configuration, programming and cloning
- Gen-set and ECU Alarm monitoring + complete real time history
- Power format and ECU units selection, password protection setting
- Controller text translation and language import wizard
- Editing of customized welcome text displayed on initial controller screen
- Direct (USB, RS232 or RS485), Modem, Internet, AirGate or off-line communication connection
- Support of electronic engines (values, alarms and commands)
- Configuration archive upgrading from older to newer software version
- Modbus or SNMP MIB tables generating



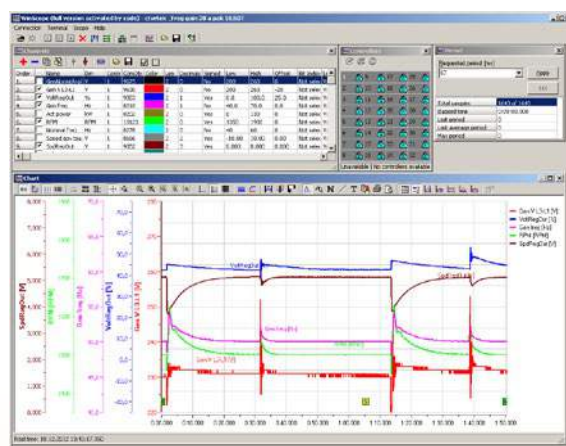
# WinScope

## SPECIAL GRAPHICAL CONTROLLER MONITORING SOFTWARE

WinScope is a high-performance PC tool, which is used for monitoring and archiving trends of controller parameters and values.

It can be used for most ComAp controllers including ECON, INCON and EMCON5.

Basic WinScope version allows four channels on a single set and can be downloaded FREE from [www.comap.cz](http://www.comap.cz)



- Fast and convenient monitoring of the values' time behaviour
- Measures and displays great number of trends from all controllers connected via I-LB+ / IB-Lite / IG-IB / InternetBridge-NT or Ethernet connection
- Adjustable period (10–10000 ms)
- Easy choice of quantity from list
- Off-line mode for data analysis
- A large number of graphic functions
- Graph printing possibility
- Direct controller's setpoints change





# WebSupervisor

## CLOUD-BASED SYSTEM FOR MONITORING AND CONTROLLING COMAP CONTROLLERS

WebSupervisor is cloud-based system designed for monitoring and controlling ComAp controllers via the Internet. This system offers a number of beneficial features that help optimize revenue for machinery fleets, as each piece of equipment can be individually monitored for all important operation values.

The system works when the controller sends regular updates to a remote secure server which then safely stores the information ready for users to view. Connection to the server is easily accessible to any registered user through an Internet enabled device such as PC, netbook, tablet or even a smart-phone – enabling equipment monitoring at any time or place.

The flexible system provides a high level of security, with the central administrator able to determine users' access rights for specific equipment within the fleet as well as appropriate information. In addition, event generated e-mails can be created and sent to specific users to give fast and efficient notification to improve decision making or react to additional revenue generating opportunities.

WebSupervisor offers equipment owners a number of powerful reporting tools allowing monthly summaries of availability and revenue creation ensuring that maintenance scheduling and asset utilization can be maximized for individual equipment and the whole fleet. The information generated from each controller can be archived on the central server for future analysis and trend evaluation.

Watch how WebSupervisor can help you to protect your gen-set/engine online.

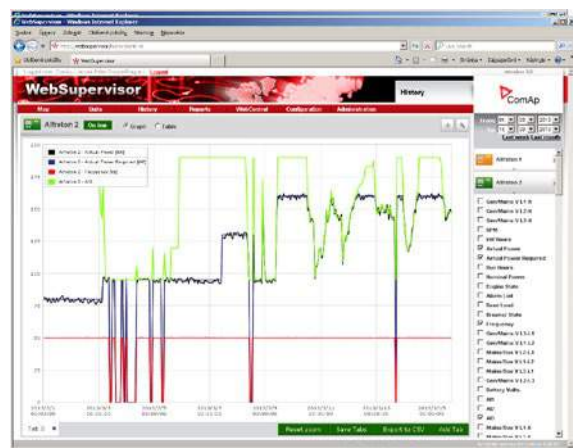
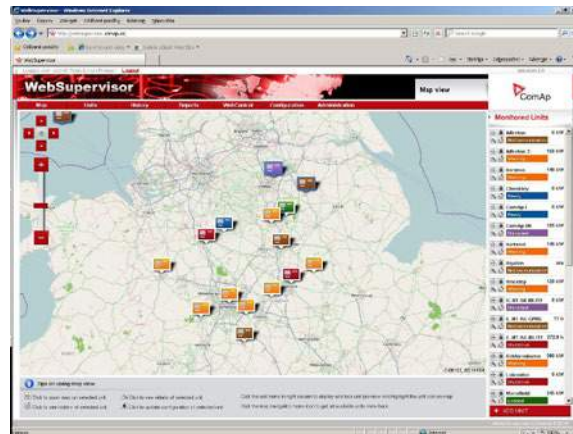


**AVAILABLE  
IN VARIOUS LANGUAGES**



**NEW FEATURE!**  
Customise your .xls reports  
to save time

- Central controlling and monitoring of main values
- Overview of controllers on the map
- History charts of main values
- Reports for revenue stream support
- Secure offsite storage at dedicated data centre
- Smart equipment supervision—higher revenue and lower maintenance costs
- Easy to use, no special installations on PC required
- Customised report values in .xls format



Simply connected

**LOCATE**

Simply here



GPS

Available on the  
**App Store**

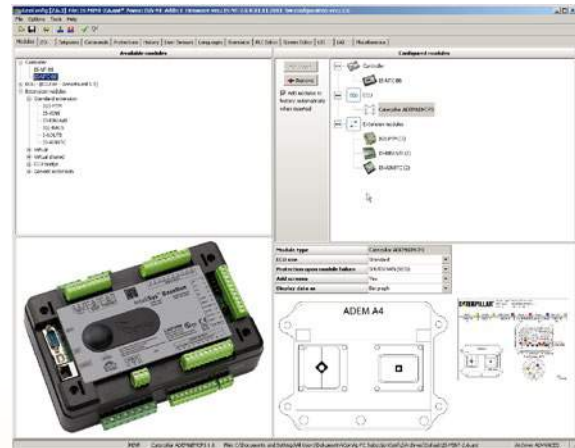
ANDROID APP ON  
**Google play**



# GenConfig

## PC CONFIGURATION TOOL

GenConfig is an off-line PC configuration tool for IntelliGen<sup>NT</sup>, IntelliSys<sup>NT</sup> and IntelliMains<sup>NT</sup> controller customizing.

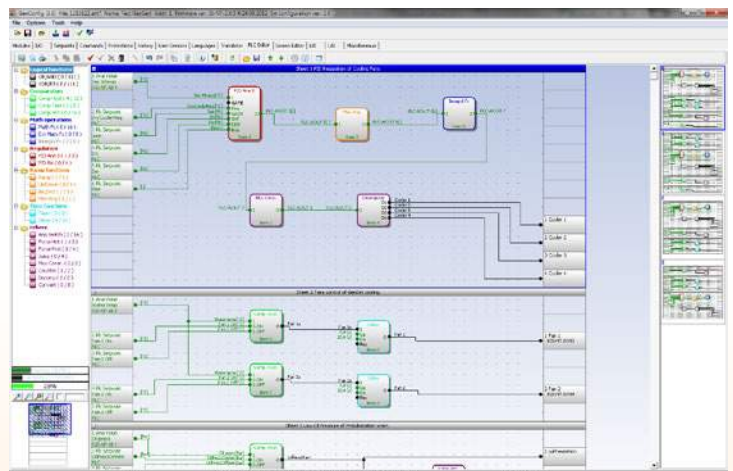


- Allows full configuration of the controller and its peripherals:
  - peripheral modules and ECU support
  - inputs/outputs
  - setpoints
  - commands
  - protections (for analog inputs/values)
  - PLC
  - history record
  - user sensors
  - languages
  - external display screen configuration
- Offers expert mode, consistency check and configuration cloning

## PLC Editor

**Part of GenConfig configuration tool for selected ComAp controllers**

- PLC functions can be moved both horizontally and vertically
- Colour-coded and linked to relevant functions
- Blocks can be organized to reflect the real process flow
- Groups of blocks can be separated on each sheet to form sub-sets within the design
- Detailed descriptions of inputs and outputs come complete with useful hints
- Context help
- Block function description





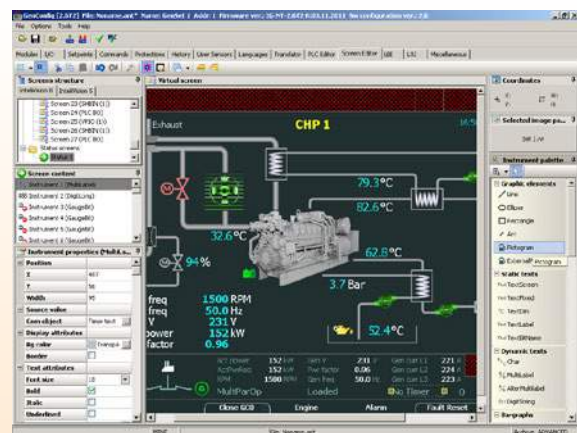
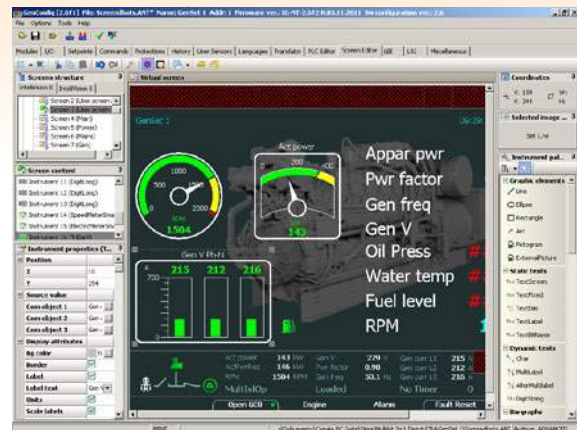


# ScreenEditor

## Part of GenConfig configuration tool for selected ComAp controllers

ScreenEditor allows you to personalise the interface on IntelliVision 5 and IntelliVision 8 models of colour displays by managing information content of screens, creating of user screens, selecting instruments and creating backgrounds from a toolbox of graphical elements.

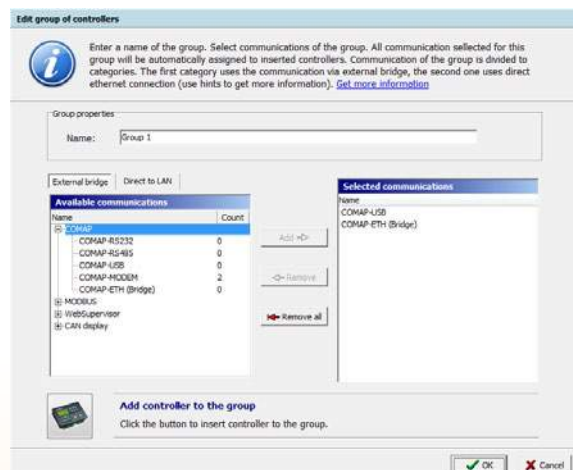
- Check screen content and layout before uploading – minimises corrections
- Prepare screens before site visit – reduces commissioning time
- Everyone can use it – no special knowledge required
- With IntelliVision 8 you can also import externally generated images – helping you brand screen displays



# RemoteCommGuide

## COMMUNICATION GUIDE FOR MOST COMAP GEN-SET CONTROLLERS

RemoteCommGuide is interactive communication guide for most ComAp gen-set controllers. It is a part of ComAp PC Suite. This useful tool helps you to easily select the proper gen-set controller according to required application and communications. RemoteCommGuide solves problem with projecting of communications and checks the wiring and settings during the commissioning.



- Easier finding of required information
- See only relevant information
- Automatically check the accessibility of required communications
- Wizard for first steps with RemoteCommGuide makes easier to understand the logic of SW
- Spare time of customer
- Make Remote communications more understandable
- Information about all controllers in one place together

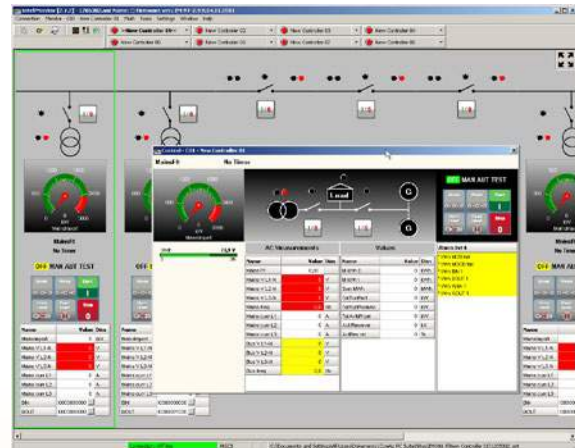
# InteliMonitor

## PC MONITORING TOOL

InteliMonitor is a free PC SCADA software for on-line supervision of most ComAp brand controllers. The software is focused on comfortable monitoring of a group of controllers.



Simply connected



- Configurable site structure
- Easy site overview
- Values, setpoints, history display
- Statistics setting (kW hours, number of starts, etc.)
- User administration
- User defined SCADA
- Direct, modem or Internet connection

## United Kingdom

### Applied Power Engineering

Applied Power Engineering (APE) specialise in control solutions for the power generation and renewables markets. With expertise covering standby, Combined Heat and Power (CHP) and complex diesel installations for emergency standby and base load applications.

With a focus on bespoke solutions and customer satisfaction APE make full use of ComAp's comprehensive product range and integrated remote monitoring and control software:

*"Our customers demand the most technologically advanced and cost-effective solutions,"* says Darren Bailey, APE Managing Director. *"ComAp have always been innovators and over the past 12 years the software packages have developed significantly, providing continuous improvements to enhance monitoring and control."*

*InteliMonitor has provided us with the ability to support clients with additional services in demanding markets. It provides standard operator interface features for use as a direct connect, on-site remote monitoring and control, as well as off site connectivity.*

*We've also found the Line Editor an invaluable tool for creating single-line diagrams of complex diesel application schemes. Our Combined Heat & Power (CHP) applications have been furnished with functional screen P&ID detail that show a generator's mechanical and electrical values, system heat values, and the position status of valves all as a colourful representation of the sites infrastructure. The client has the benefit of viewing his site information on a single- or multiple-site operator interface PC(s) or industrial touchscreen panel mount PC(s).*

*APE and our customers will continue to benefit from ComAp products and remote monitoring packages, and we're excited to see what's developed next."*

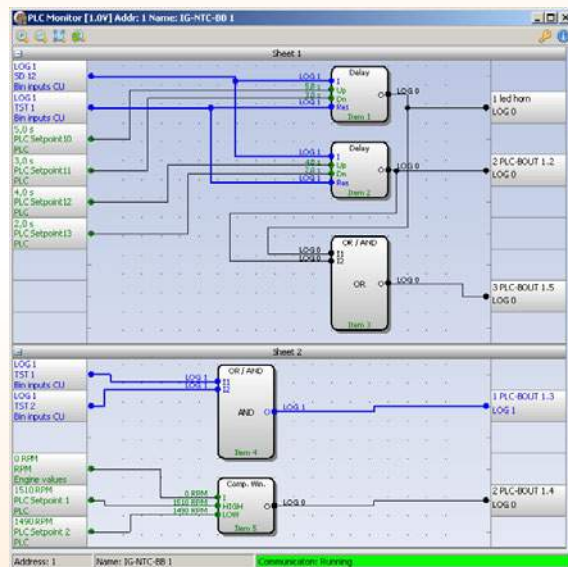




# PLC Monitor

Part of IntelliMonitor monitoring tool  
for selected ComAp controllers

- Easy online monitoring of PLC values
- Big progress in PLC support within IntelliGen<sup>NT</sup>, IntelliSys<sup>NT</sup> and IntelliMains<sup>NT</sup> controllers
- Significantly saves time during commissioning – provides overview of all current PLC values
- Besides PLC Editor which allows to compose PLC program we can now offer online presentation of actual PLC data
- Intuitive operation and easily visible signals
- Graphics consistent with PLC Editor
- Zoom functions for optimized reading



## PC TOOLS



# DriveConfig

PC CONFIGURATION TOOL

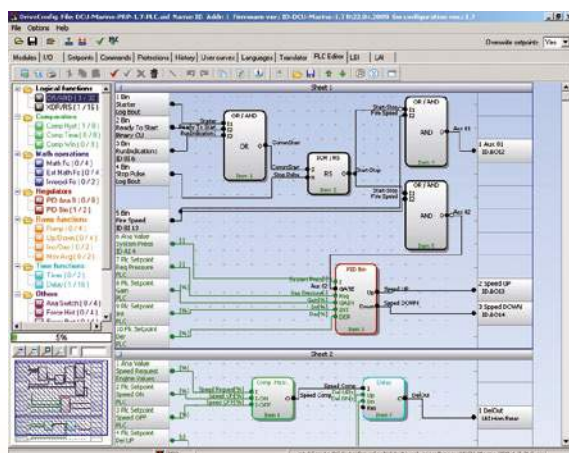
DriveConfig is an off-line PC configuration tool for customising IntelliDrive DCU and IntelliDrive Mobile controllers.



Simply connected



ScreenEditor



- Inputs/Outputs modules addressing
- The controller Inputs/Outputs configuration
- J1939 values configuration
- History record configuration
- Password protection activation
- Sensor characteristics configuration
- Programmable logic configuration
- Controller texts translation
- Graphical, user-friendly PLC editor





## InteliCharger 60 12-A / 60 24-A

AUTOMATIC BATTERY CHARGERS

- Sealed electronic construction
- Protection: short circuit / overload / over voltage / over temperature / reverse battery
- Universal AC input ranges
- Low ripple output
- Naturally cooled
- Voltage adjust potentiometer
- Optional fail alarm relay<sup>1)</sup>
- Charger can be used as a standalone power supply



## InteliCharger 500

AUTOMATIC BATTERY CHARGER

- 20 A nominal outputs
- High power and efficiency
- High reliability
- Suits all battery types
- Fully automatic operation
- 24 V nominal outputs
- Naturally cooled – fan less design
- Optional alarms (& bi-colour led's)
- Optional intelligent multi-stage charge profile with auto equalise
- Optional boost charging system



## InteliCharger 120 12

AUTOMATIC BATTERY CHARGER

- 12 V / 10 A nominal output
- Adjustable voltage and current output
- Microprocessor controlled charging algorithm
- Protections: short circuit / overload / over temperature / reverse battery / battery under voltage
- Universal AC input range
- Naturally cooled
- Fail alarm relays
- Charger can be used as a standalone power supply
- NiCd battery support



## InteliCharger 240 24

AUTOMATIC BATTERY CHARGER

- 24 V / 10 A nominal output
- Adjustable voltage and current output
- Microprocessor controlled charging algorithm
- Protections: short circuit / overload / over temperature / reverse battery / battery under voltage
- Universal AC input range
- Naturally cooled
- Fail alarm relays
- Charger can be used as a standalone power supply
- NiCd battery support



## InteliCharger 240 12-24

AUTOMATIC BATTERY CHARGER

- 24 V / 5 A or 12 V / 6 A nominal output (dual voltage)
- Adjustable voltage and current output
- Microprocessor controlled charging algorithm
- Protections: short circuit / overload / over temperature / reverse battery / battery under voltage
- Universal AC input range
- Naturally cooled
- Fail alarm relay
- Charger can be used as a standalone power supply
- NiCd battery support



<sup>1)</sup> This feature is available with Intelicharger 60 12-AF and Intelicharger 60 24-AF models, also offered by ComAp.

## ELECTRONIC POTENTIOMETERS



### EP250

ELECTRONIC  
POTENTIOMETER

- Microprocessor-controlled device designed for control and regulation systems
- 3 binary inputs (increase, decrease, init), one 2-pole output of variable resistance
- Position of the wiper is controlled by binary inputs
- Current percentage value is indicated by LED bar graph on the front panel
- Setpoints (position change rate and init position) are adjustable via DIP switches



### EP300

ELECTRONIC  
POTENTIOMETER

- Microprocessor-controlled device designed for control and regulation systems
- 3 binary inputs (increase, decrease, init), one 3-pole output of variable resistance (potentiometer)
- Position of the wiper is changed by binary inputs
- Current percentage value is indicated by LED display on the front panel
- Setpoints (position change rate, position limits, init position and others) are adjustable via buttons and LED display on the front panel



# About ComAp







# ComAp

**ComAp is a dynamic international company with a solid reputation for delivering innovative electronic solutions to the power generation, industrial engine and equipment markets. By providing customers with state-of-the-art products, ComAp has built a name for delivering excellent reliability and good value.**

## Excellent and reliable product solutions

ComAp specializes in creating electronic control and management solutions for use in the power generation industries and drive power markets. Our portfolio of products, software and accessories is designed to support emergency power, standby power generation and engine driven applications all over the world. We also work closely with our customers to develop unique customized and turn key solutions for ordinary and extraordinary applications delivering high standards of excellence on every project.



ComAp products represent some of the most reliable solutions on the market today. Every component and product undergoes the most rigorous standards during manufacture, with every stage being undertaken in accordance with international ISO 9001 certification. Our products are backed with the approvals from major Marine Certification Societies. Accreditation

UEFA European Football Championship (National stadium in Warsaw)



at the highest-level breeds confidence, and every ComAp product is supplied with an appropriate warranty and after-sales support for complete peace of mind.

## People make the difference

ComAp's key strengths are flexibility, experience, knowledge and enthusiasm. This blend of values defines our personality and gives you the assurance of a truly honest and positive relationship. By supporting our people, investing in their development and encouraging creativity, our teams work hard to find new opportunities, technologies and solutions that enable us to successfully help our customers solve their problems effectively.

At ComAp, we believe passionately in the importance of continuously developing new technology along with forward thinking software and hardware to maintain the enviable position as worldwide leader in communication and control for power generation and drive power applications.

At the heart of this process is a strong desire to exceed our customers' expectations by finding outstanding solutions for them and drawing upon the company's most valuable

F1 Singapore GrandPrix







asset – people. Over 80% of ComAp employees are graduates with specialized electronic and programming knowledge appropriate to the innovative development of market-orientated engine management systems. This unique know-how is matched by ComAp's significant investment at every stage of the research and development process, resulting in the creation of leading edge modern development facilities. ComAp is proud to continue being one of the top companies in the

world, an achievement which is challenging to sustain, but something we endeavour to preserve. We consistently set high standards, and try to be the best, something which is reflected by our achievement in the 'Best Employers Study in the Czech Republic' (conducted by Hewitt Associates), where we were awarded first place in 2009.

And, amidst fierce competition, in 2011 we were delighted to be amongst the top five companies in the Czech Republic once again. Our passion for excellence pushes us ever forward, and you can be sure that whatever the future brings, we will be there.

### Putting customers first

ComAp's expertise extends beyond innovative controllers, our key strengths are flexibility, experience, knowledge and enthusiasm, enabling us to successfully help our customers solve their problems quickly and effectively. Using our vast global distribution network with 24 hour technical support, and a free dedicated training centre in Prague, we are able to work closely with our clients, maintaining the highest level of satisfaction, something we are very passionate about, and constantly strive to achieve.



### Key Milestones

#### 1991

ComAp is established.

#### 1993

Successful commissioning of four Gen-set Control Systems made by ComAp on several islands in the Mediterranean.

#### 1994

MX controller, the second generation of ComAp's gen-set control systems, is launched.

#### 1996

PX, the revolutionary gen-set controller with configurable input and outputs, is developed.

#### 2000

InteliGen, the first member of the Inteli family and flagship of their gen-set control systems, is released.

#### 2001

ComAp Ltd. – The first foreign ComAp subsidiary is established close to Bristol.

#### 2002

InteliSys, a top end product dedicated to CHP and large engine control applications, is released. New mid-range product InteliLite is launched for AMF and – InteliDrive controllers for non gen-sets, engine driven applications is released.

#### 2006

ComAp LLC – ComAp subsidiary to promote products in the USA and Canada is established.

#### 2007

InteliVision 8 – the first color display unit in the power generation field.

#### 2008

InteliCompact – controller for simple paralleling gensets is launched.

#### 2010

InteliVision 5 and InteliGen<sup>NT</sup> BaseBox controller concept are released.

#### 2012

Application for Apple iOS devices and Google Android devices is launched allowing product control via smartphones and tablets.



#### 2014

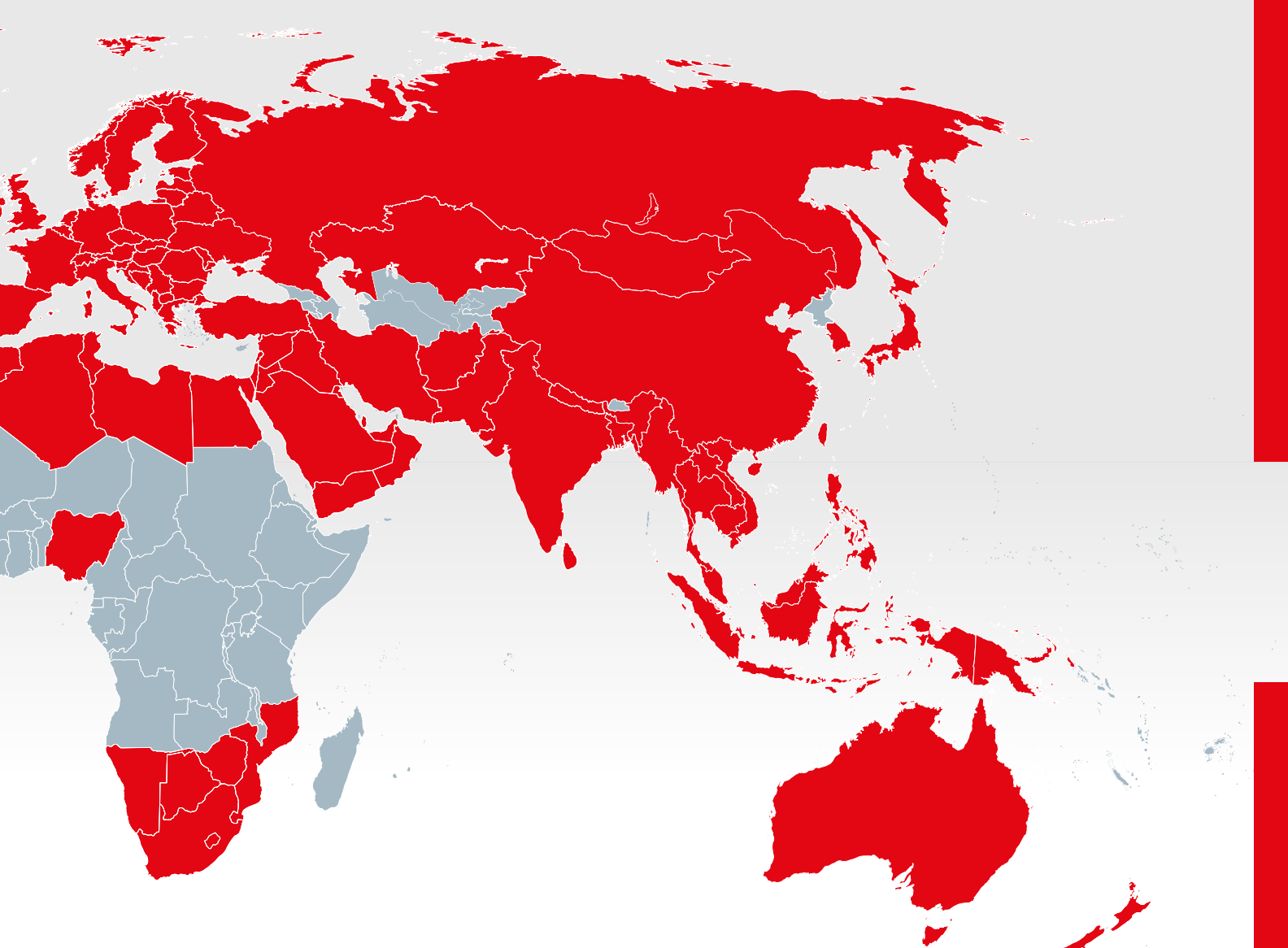
ComAp's WebSupervisor is translated into its 10<sup>th</sup> language: Portuguese.

## Professional partnerships

ComAp's extensive global distributor network means that products are locally available in more than 100 countries, spanning every continent in the world. Through our professional and highly dedicated global distributor network we can satisfy customers' needs, however challenging.

Each ComAp distributor is carefully selected for their professionalism, product expertise and recognized quality standards and accreditation, and as such can advise customers on any matter relating to ComAp products and their applications.

 Afghanistan ComAp <a href="http://www.comap.cz">www.comap.cz</a>	 Bulgaria ComAp <a href="http://www.comap.cz/cee">www.comap.cz/cee</a>	 Estonia Tapimec OY <a href="http://www.tapimec.fi">www.tapimec.fi</a>	 Iraq ComAp <a href="http://www.comap.cz">www.comap.cz</a>
 Algeria H-T-F <a href="http://www.h-t-f.fr">www.h-t-f.fr</a>	 Cambodia ComAp <a href="http://www.comap.cz">www.comap.cz</a>	 Faroe Islands PTECH <a href="http://www.ptech.dk">www.ptech.dk</a>	 Ireland Industrial Power Units Ltd. <a href="http://www.ipu.co.uk">www.ipu.co.uk</a>
 Argentina Servintel International S.A. <a href="http://www.servintel.com">www.servintel.com</a>	 Canada ComAp <a href="http://www.comapllc.com">www.comapllc.com</a>	 Finland Tapimec OY <a href="http://www.tapimec.fi">www.tapimec.fi</a>	 Israel Generkal Industries Ltd. <a href="http://www.generkal.co.il">www.generkal.co.il</a>
 Australia ComAp <a href="http://www.comap.com.au">www.comap.com.au</a>	 Chile Servintel International S.A. <a href="http://www.servintel.com">www.servintel.com</a>	 France H-T-F <a href="http://www.h-t-f.fr">www.h-t-f.fr</a>	 Italy ComAp <a href="http://www.comap.cz/it">www.comap.cz/it</a>
 Austria ComAp <a href="http://www.comap.cz/de">www.comap.cz/de</a>	 China Jones Engineering Co., Ltd. <a href="http://www.jones.com.hk">www.jones.com.hk</a>	 Georgia ComAp <a href="http://www.comap.cz/cee">www.comap.cz/cee</a>	 Japan Security Japan Inc. <a href="http://www.secjapan.jp">www.secjapan.jp</a>
 Bangladesh Reverie Power & Automation Engineering Ltd. <a href="http://www.reverie-bd.com">www.reverie-bd.com</a>	 Colombia Ingenergia <a href="http://www.ingenergia.com.co">www.ingenergia.com.co</a>	 Germany ComAp <a href="http://www.comap.cz/de">www.comap.cz/de</a>	 Jordan Jabbour Datakom S.A.R.L. <a href="http://www.jabbourpower.com">www.jabbourpower.com</a>
 Belarus ComAp <a href="http://www.comap.cz/cee">www.comap.cz/cee</a>	 Costa Rica Propace Ingenieria, S.A. <a href="http://www.propace.net">www.propace.net</a>	 Greece A. Sapounas S.A. <a href="http://www.sapounas.gr">www.sapounas.gr</a>	 Kazakhstan ComAp <a href="http://www.comap-russia.ru">www.comap-russia.ru</a>
 Belgium Controlin BV <a href="http://www.controlin.nl">www.controlin.nl</a>	 Croatia Koch D.O.O. <a href="http://www.koch.ba">www.koch.ba</a>	 Greenland PTECH <a href="http://www.ptech.dk">www.ptech.dk</a>	 Kuwait ComAp <a href="http://www.comap.cz">www.comap.cz</a>
 Bolivia ComAp <a href="http://www.comap.cz">www.comap.cz</a>	 Czech Republic ComAp <a href="http://www.comap.cz/cee">www.comap.cz/cee</a>	 Hong Kong Jones Engineering Co., Ltd. <a href="http://www.jones.com.hk">www.jones.com.hk</a>	 Laos ComAp <a href="http://www.comap.cz">www.comap.cz</a>
 Bosnia and Herzegovina Koch D.O.O. <a href="http://www.koch.ba">www.koch.ba</a>	 Denmark PTECH <a href="http://www.ptech.dk">www.ptech.dk</a>	 Hungary ComAp <a href="http://www.comap.cz/cee">www.comap.cz/cee</a>	 Latvia ComAp <a href="http://www.comap.cz/cee">www.comap.cz/cee</a>
 Botswana FAR Diesel Power Services <a href="http://www.fardiesel.com">www.fardiesel.com</a>	 East Timor ComAp <a href="http://www.comap.com.au">www.comap.com.au</a>	 India Madhura International <a href="http://www.madhura.net">www.madhura.net</a>	 Lebanon Jabbour Datakom S.A.R.L. <a href="http://www.jabbourpower.com">www.jabbourpower.com</a>
 Brazil Servintel International S.A. <a href="http://www.servintel.com">www.servintel.com</a>	 Ecuador SVF Ecuador <a href="mailto:pcarmigniani@svf-ecuador.com">pcarmigniani@svf-ecuador.com</a>	 Indonesia PT. FS Power Control <a href="http://www.fspowercontrol.co.id">www.fspowercontrol.co.id</a>	 Lesotho FAR Diesel Power Services <a href="http://www.fardiesel.com">www.fardiesel.com</a>
 Brunei Darussalam ComAp <a href="http://www.comap.cz">www.comap.cz</a>	 Egypt Power For Contracting & Electromech. Sup. <a href="http://www.elmotahdagroup.com">www.elmotahdagroup.com</a>	 Iran Dorna Mehr <a href="http://www.dornamehr.com">www.dornamehr.com</a>	 Libya Power For Contracting & Electromech. Sup. <a href="http://www.elmotahdagroup.com">www.elmotahdagroup.com</a>



Lithuania ComAp <a href="http://www.comap.cz/cee">www.comap.cz/cee</a>	New Zealand ComAp <a href="http://www.comap.com.au">www.comap.com.au</a>	Saudi Arabia ComAp <a href="http://www.comap.cz">www.comap.cz</a>	Taiwan Arith Company Ltd. <a href="http://www.arith.com.tw">www.arith.com.tw</a>
Luxembourg Controlin BV <a href="http://www.controlin.nl">www.controlin.nl</a>	Nigeria ComAp <a href="http://www.comap.cz">www.comap.cz</a>	Serbia Koch D.O.O. <a href="http://www.koch.ba">www.koch.ba</a>	Thailand Bangkok Controller Ltd. <a href="http://www.bangkokcontroller.com">www.bangkokcontroller.com</a>
Macedonia Koch D.O.O. <a href="http://www.koch.ba">www.koch.ba</a>	Norway Industrimarin AS <a href="http://www.industrimarin.com">www.industrimarin.com</a>	Singapore ComAp <a href="http://www.comap.cz">www.comap.cz</a>	Tunisia H-T-F <a href="http://www.h-t-f.fr">www.h-t-f.fr</a>
Malaysia Sunpower Engineering & Ent. <a href="mailto:sunpower.ee@gmail.com">sunpower.ee@gmail.com</a>	Oman ComAp <a href="http://www.comap.cz">www.comap.cz</a>	Slovakia ComAp <a href="http://www.comap.cz/cee">www.comap.cz/cee</a>	Turkey Beteks Engineering Co. Ltd <a href="http://www.betex.com.tr">www.betex.com.tr</a>
Mexico Dupont Elektrik Mexico, SA DE CV <a href="http://www.dwppon.com">www.dwppon.com</a>	Pakistan R.A. Engineering & Services <a href="http://www.raeng.com">www.raeng.com</a>	Slovenia ComAp <a href="http://www.comap.cz/cee">www.comap.cz/cee</a>	Ukraine ComAp <a href="http://www.comap.cz/cee">www.comap.cz/cee</a>
Moldova ComAp <a href="http://www.comap.cz/cee">www.comap.cz/cee</a>	Papua New Guinea ComAp <a href="http://www.comap.cz">www.comap.cz</a>	South Africa FAR Diesel Power Services <a href="http://www.fardiesel.com">www.fardiesel.com</a>	United Arab Emirates ComAp <a href="http://www.comap.cz">www.comap.cz</a>
Mongolia ComAp <a href="http://www.comap.cz/cee">www.comap.cz/cee</a>	Peru ComAp <a href="http://www.comap.cz">www.comap.cz</a>	South Korea Boo Young Corporation <a href="http://www.boo-young.com">www.boo-young.com</a>	United Kingdom Industrial Power Units Ltd. <a href="http://www.ipu.co.uk">www.ipu.co.uk</a>
Morocco H-T-F <a href="http://www.h-t-f.fr">www.h-t-f.fr</a>	Philippines Static Power Philippines, Inc. <a href="http://www.static.ph">www.static.ph</a>	Spain Gencontrol Systems, S.A. <a href="http://www.gencontrol.es">www.gencontrol.es</a>	United States ComAp <a href="http://www.comapllc.com">www.comapllc.com</a>
Mozambique FAR Diesel Power Services <a href="http://www.fardiesel.com">www.fardiesel.com</a>	Poland ComAp CEE <a href="http://www.comap.cz/cee">www.comap.cz/cee</a>	Sri Lanka ComAp <a href="http://www.comap.cz">www.comap.cz</a>	Uruguay Servintel International S.A. <a href="http://www.servintel.com">www.servintel.com</a>
Myanmar ComAp <a href="http://www.comap.cz">www.comap.cz</a>	Portugal ComAp <a href="http://www.comap.cz">www.comap.cz</a>	Swaziland FAR Diesel Power Services <a href="http://www.fardiesel.com">www.fardiesel.com</a>	Venezuela ComAp <a href="http://www.comap.cz">www.comap.cz</a>
Namibia FAR Diesel Power Services <a href="http://www.fardiesel.com">www.fardiesel.com</a>	Qatar ComAp <a href="http://www.comap.cz">www.comap.cz</a>	Sweden Industrimarin Sverige AS <a href="http://www.industrimarin.com">www.industrimarin.com</a>	Vietnam DP Consulting <a href="http://www.dp-consulting.com.vn">www.dp-consulting.com.vn</a>
Nepal ComAp <a href="http://www.comap.cz">www.comap.cz</a>	Romania ComAp <a href="http://www.comap.cz/cee">www.comap.cz/cee</a>	Switzerland ComAp <a href="http://www.comap.cz/de">www.comap.cz/de</a>	Yemen ComAp <a href="http://www.comap.cz">www.comap.cz</a>
Netherlands Controlin BV <a href="http://www.controlin.nl">www.controlin.nl</a>	Russia ComAp <a href="http://www.comap-russia.ru">www.comap-russia.ru</a>	Syria Jabbour Datakom S.A.R.L. <a href="http://www.jabbourpower.com">www.jabbourpower.com</a>	Zimbabwe FAR Diesel Power Services <a href="http://www.fardiesel.com">www.fardiesel.com</a>



# TRAINING CENTRE

## Learn more about our products

The ComAp state-of-the-art Training Centre in Prague, Czech Republic allows ComAp customers unrivalled use and access to ComAp products in a modern purpose built facility. The centre has been designed for both theoretical classroom-based training sessions, and also practical experience based training using the latest ComAp products on operational gen-sets.

The group of installed gen-sets are able to simulate real-world conditions to allow customers to understand the practical application of ComAp products. This practical experience is invaluable in creating a learning environment and was a key consideration when building the new facility.

The embedded control systems allow users to simulate any application from simple applications with just basic controllers to complex (multiple Mains/gen-set) applications with bus tie breakers and feeders. Users can experience simulated drops in power, load shedding and many other scenarios without risking damage to expensive

equipment, as the demonstration machines have been specifically designed for training purposes.

For the price of travel and a hotel, you can learn at your own speed, without risking damage to expensive equipment. Hands-on training helps lower downtime, which helps keep costs down, through users enjoying and understanding the full benefits of their systems, taught by product specialists selected for their expertise.

### Our programme of training includes the following courses:

- ▶ Standard A
- ▶ Standard B
- ▶ Advanced
- ▶ Advanced Plus
- ▶ Engine
- ▶ Bi-fuel



Simply register online for our hands-on training courses.

For details of each course refer to the ComAp website

**[www.comap.cz/support/training/hands-on/](http://www.comap.cz/support/training/hands-on/)**



## TECHNICAL SUPPORT

**Call us on +420 246 012 666**

Our technical support specialists will help you to solve your requests. Detail info at **[www.comap.cz/support/technicalsupport](http://www.comap.cz/support/technicalsupport)**

Available Monday to Friday (excluding national holidays).

# A-Z Page Index

Product name	Page
DriveConfig	77
EP250	78
EP300	78
GenConfig	74
I-AOUT8	67
IB-Lite	62
IC-NT CT-BIO7	63
ID-COM	71
ID-RPU	70
ID-SCM	70
IG-AVRi	65
IG-IOM	63
IGL-RA15	63
IGS-PTM	65
I-LB+	66
IL-NT AIO	68
IL-NT AOUT8	63
IL-NT BIO8	63
IL-NT GPRS	62
IL-NT IO1	69
IL-NT RS232	63
IL-NT RS232-485	63
IL-NT S-USB	63
Inteli AIN8	67
Inteli AIN8TC	67
Inteli AIO9/1	67
Inteli OI8/8	67
InteliATS <sup>NT</sup>	32
InteliBifuel 2	54
InteliBifuel 20	54
InteliCompact <sup>NT</sup> MINT	18
InteliCompact <sup>NT</sup> SPtM	16
InteliDrive DCU Industrial	46
InteliDrive DCU Marine	48
InteliDrive Lite	42
InteliDrive Lite EM	45
InteliDrive Lite FPC	44

Product name	Page
InteliDrive Mobile	50
InteliDrive Mobile Logger	52
InteliDrive Nano	40
InteliDrive Nano WP	41
InteliGen <sup>NT</sup>	22
InteliGen <sup>NTC</sup> BaseBox	24
InteliCharger 60 12-A	78
InteliCharger 60 24-A	78
InteliCharger 120 12	78
InteliCharger 240 24	78
InteliCharger 240 12-24	78
InteliCharger 500	78
InteliLite <sup>NT</sup> AMF	14
InteliLite <sup>NT</sup> MRS	12
InteliMains <sup>NTC</sup> BaseBox	28
InteliMonitor	76
InteliNano <sup>NT</sup> AMF	8
InteliNano <sup>NT</sup> MRS	8
InteliNano <sup>NT</sup> Plus	10
InteliPro	37
InteliSys <sup>NTC</sup> BaseBox	26
InteliVision 5	58
InteliVision 5 CAN	59
InteliVision 5 CAN Backlit	59
InteliVision 8	60
InteliVision 8 Marine	60
InteliVision 17Touch	61
InternetBridge-NT	66
IS-AIN8	67
IS-BIN16/8	71
LiteEdit	72
MainsCompact <sup>NT</sup>	20
MainsPro	36
RemoteCommGuide	75
WebSupervisor	73
WinScope	72

## Order codes (The overview of selected products and their order codes)

Product name	Order code
InteliNano <sup>NT</sup> MRS	IN-NT MRS
InteliNano <sup>NT</sup> AMF	IN-NT AMF
InteliNano <sup>NT</sup> Plus	IN-NT PLUS
InteliLite <sup>NT</sup> MRS 10	IL-NT MRS10
InteliLite <sup>NT</sup> MRS 15	IL-NT MRS15
InteliLite <sup>NT</sup> MRS 16	IL-NT MRS16
InteliLite <sup>NT</sup> AMF 20	IL-NT AMF20
InteliLite <sup>NT</sup> AMF 25	IL-NT AMF25
InteliCompact <sup>NT</sup> SPtM	IC-NT SPTM
InteliCompact <sup>NT</sup> MINT	IC-NT MINT
MainsCompact <sup>NT</sup>	MC-NT
InteliGen <sup>NT</sup>	IG-NT GC
InteliGen <sup>NTC</sup> BaseBox	IG-NTC-BB
InteliSys <sup>NTC</sup> BaseBox	IS-NTC-BB
InteliMains <sup>NTC</sup> BaseBox	IM-NTC-BB
InteliATS <sup>NT</sup> STD	IA-NT STD
InteliATS <sup>NT</sup> PWR	IA-NT PWR

Product name	Order code
InteliPro	INTELI PRO
MainsPro	MAINSPRO
InteliDrive Nano	ID-NANO
InteliDrive Nano WP	ID-NANO WP
InteliDrive Lite	ID-FLX-LITE
InteliDrive Lite EM	INTELIDRIVE EM
InteliDrive Lite FPC	ID-FLX FPC
InteliDrive DCU Industrial	ID-DCU
InteliDrive DCU Marine	ID-DCU MARINE
InteliDrive Mobile	ID-MOBILE
InteliDrive Mobile Logger	ID-MOBILE LOGGER
InteliBifuel 2	IBF-2
InteliBifuel 20	IBF-20
InteliVision 5	INTELIVISION 5
InteliVision 8	INTELIVISION 8
InternetBridge-NT	IB-NT



MANUFACTURER

LOCAL DISTRIBUTOR / PARTNER

### **ComAp a.s.**

Kundratka 2359/17, 180 00 Prague 8  
Czech Republic  
Phone: + 420 246 012 111  
Fax: + 420 266 316 647  
info@comap.cz • www.comap.cz

**Customer satisfaction is our mission. We continuously develop our people to be the best to succeed in our mission.**

© ComAp. 2015-04/CPCEPRGU. All rights reserved.  
Specifications in this Product Guide are subject to change without notice.